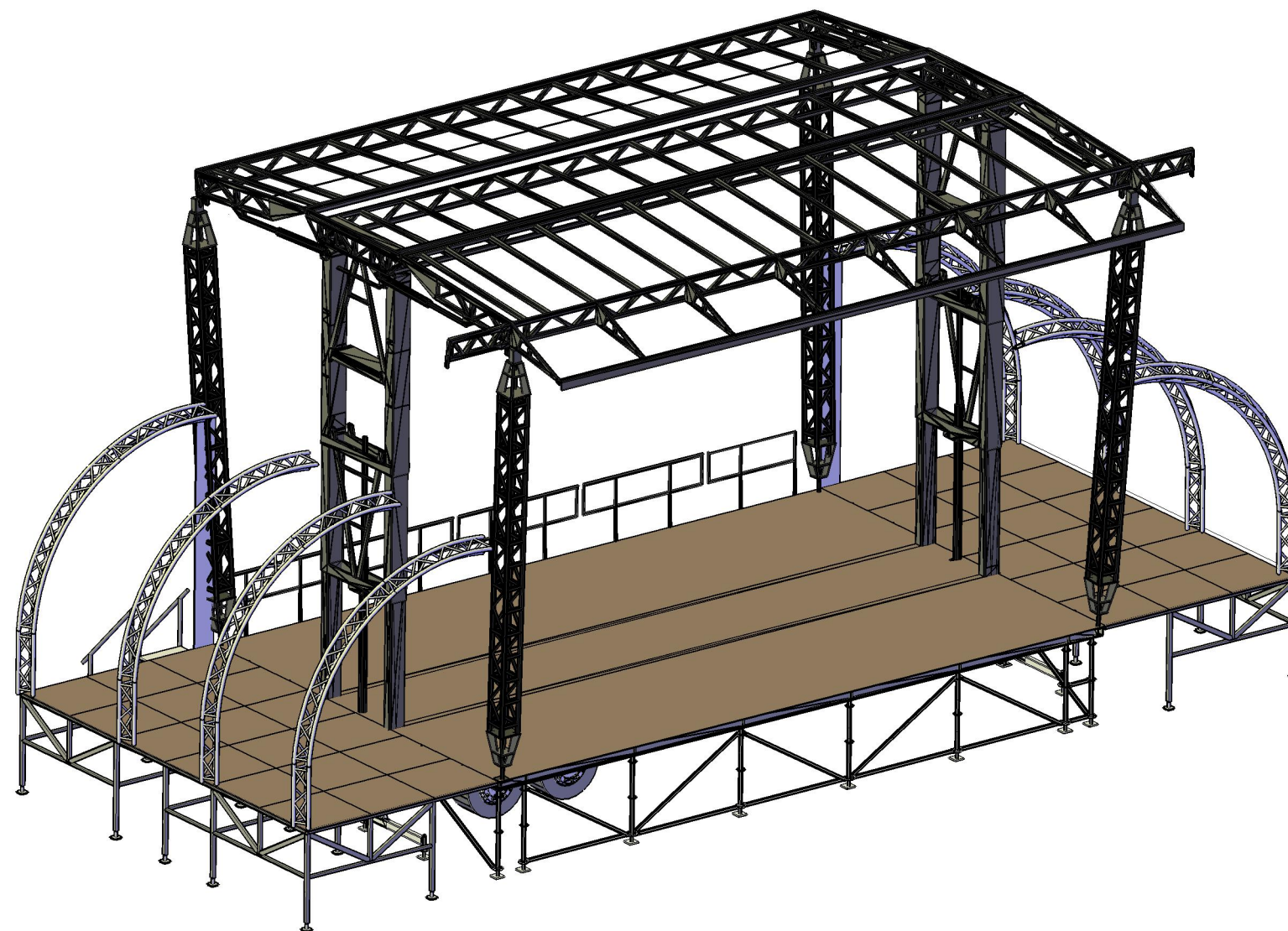
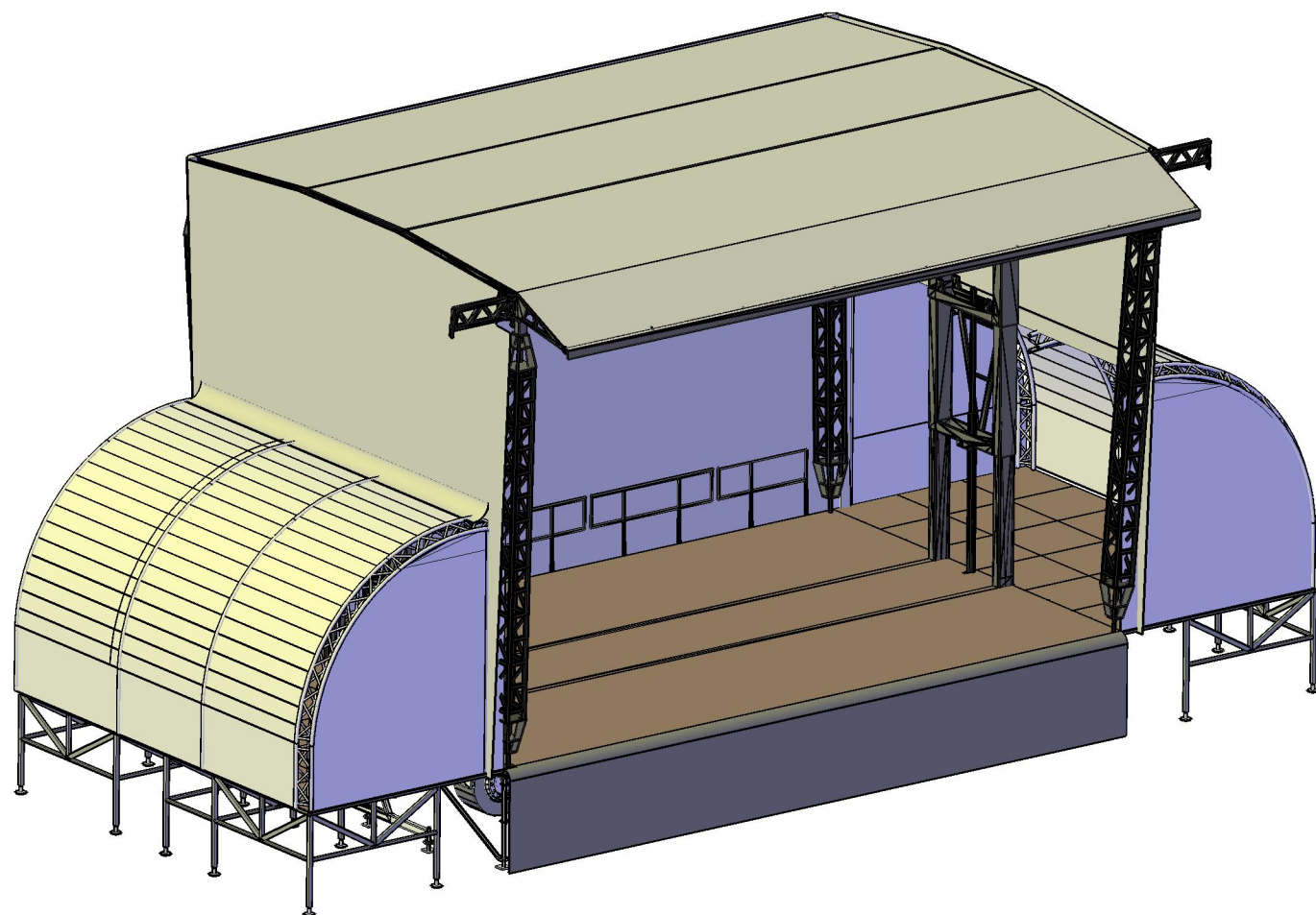




ASE
ALL STAGE EQUIPMENT

M80

11.5 x 7m + SideStages 7 x 3.2m



Information M80:

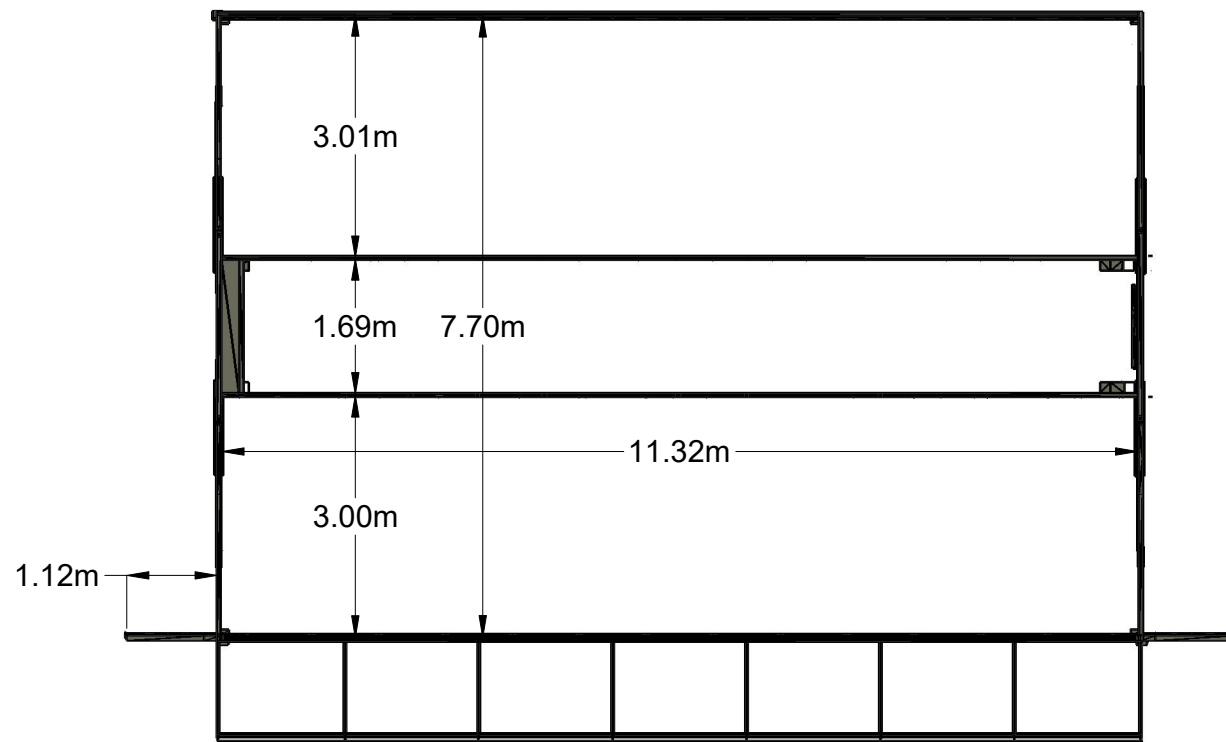
- **Clearance: 6.20m**
- **Main Floor: 11.5 x 7m**
- **Stage Floor height: 1.4 to 2m**
- **Optional 4x3m Front of House available**
- **Integrated SideStages available (7 x 3.2m)**



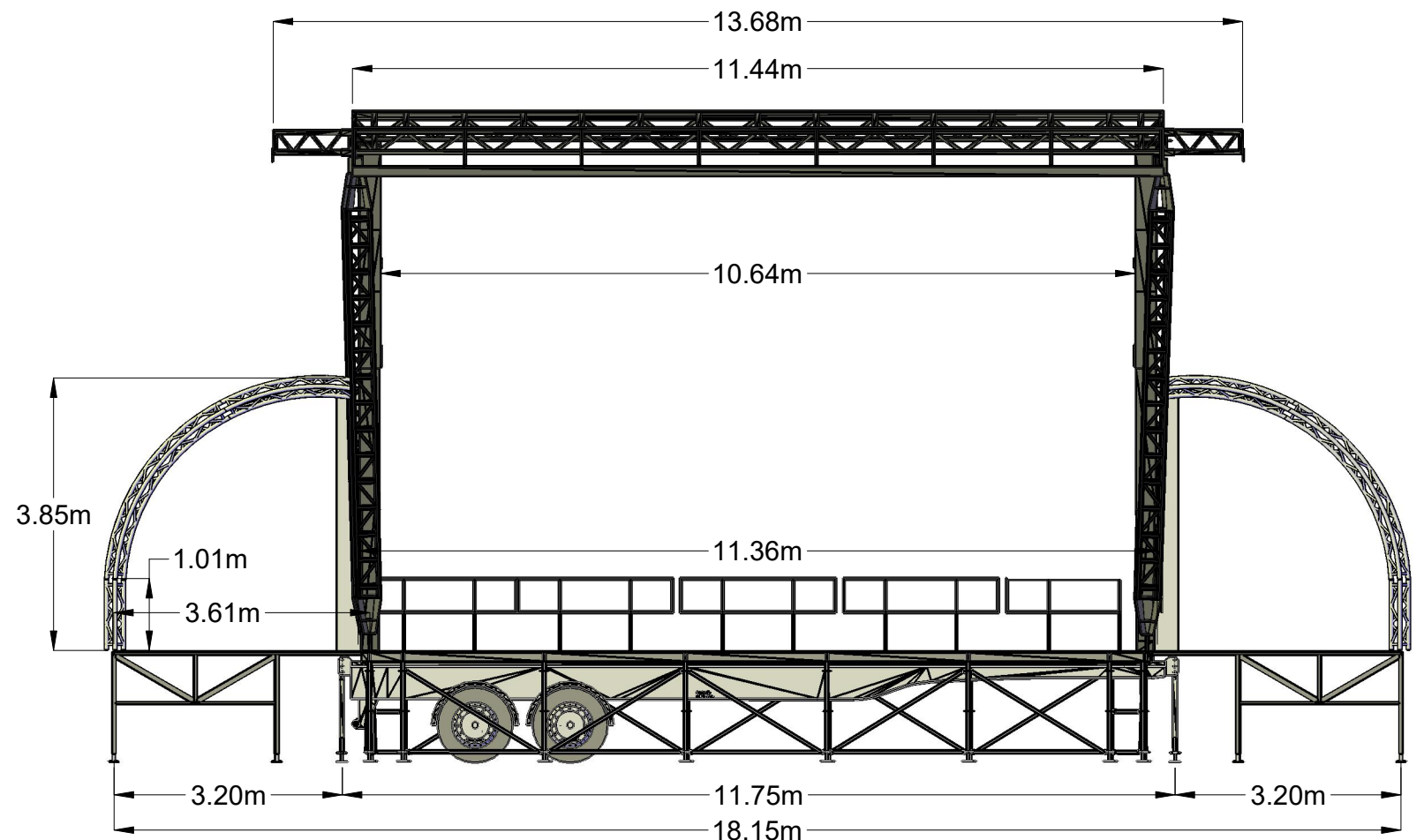
ASE
ALL STAGE EQUIPMENT

M80

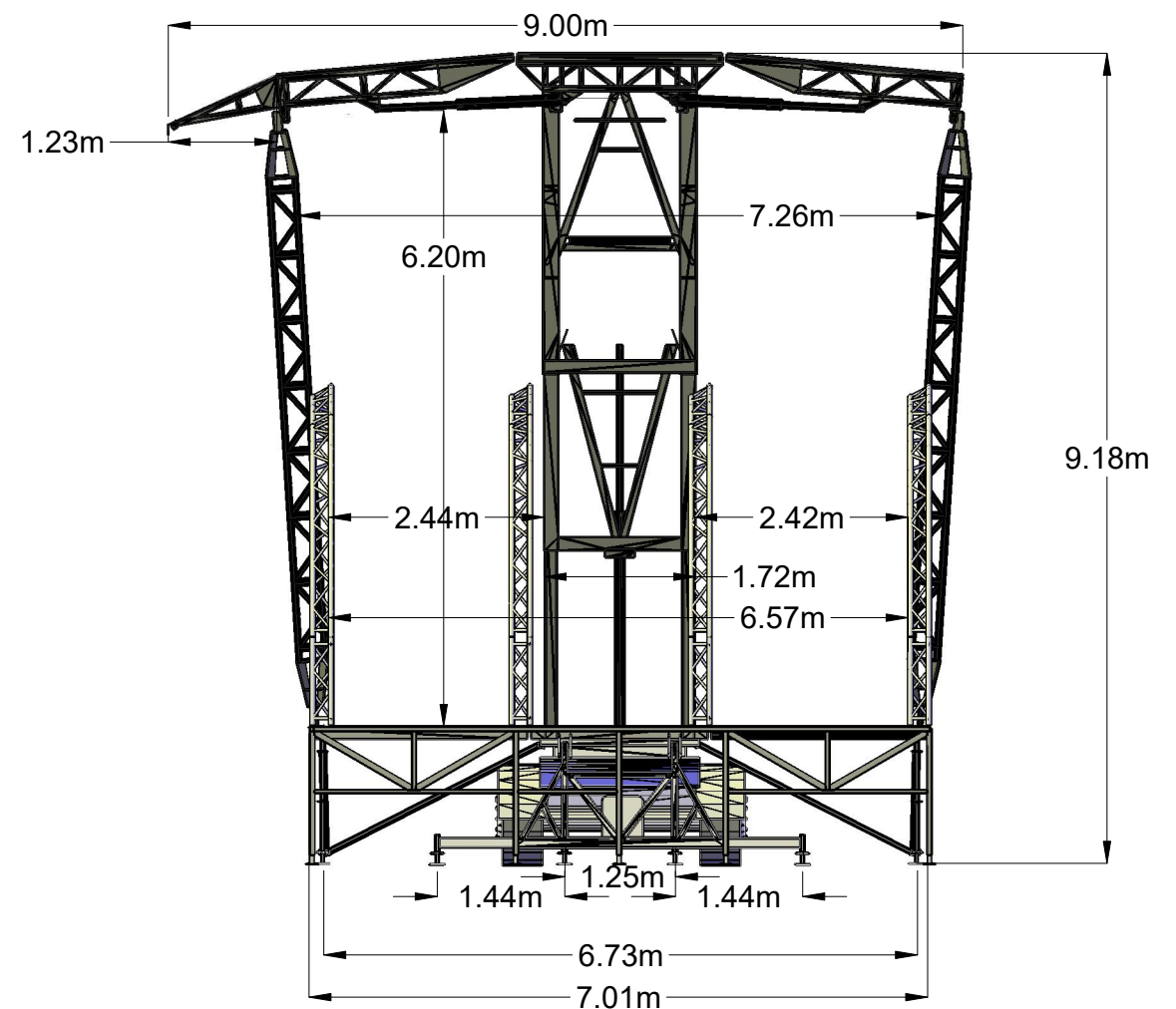
11.5 x 7m + SideStages 7 x 3.2m



Rigging Structure



Front View



Side View

Rigging Information M80:

- Total rigging capacity: 10 tons in optimal loading configuration !
- Rigging capacity PA wings: 1 ton each

Every rigging plan must be validated by ASE before hanging lights and sound equipment!

Rigging Information M80



	Center Point Load	3 Point Load	Uniformly Distributed Load
Front/Back Roof Beam Amount: 5#	1350 daN	675 daN / Point	519 daN / m
Central Roof Beam Amount: 2#	1000 daN	500 daN / Point	420 daN / m
PA wings	1000 daN / Point	/	/

