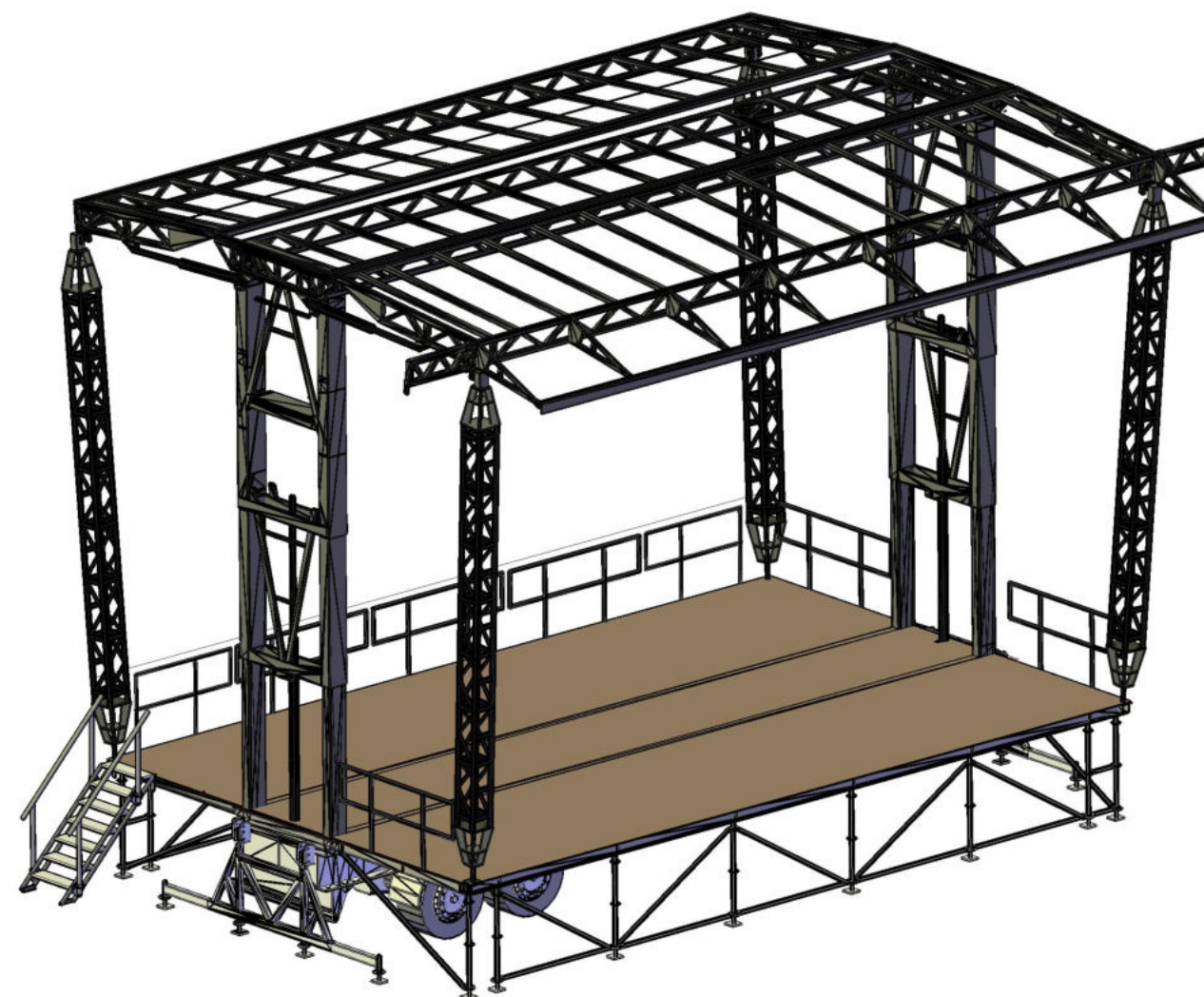
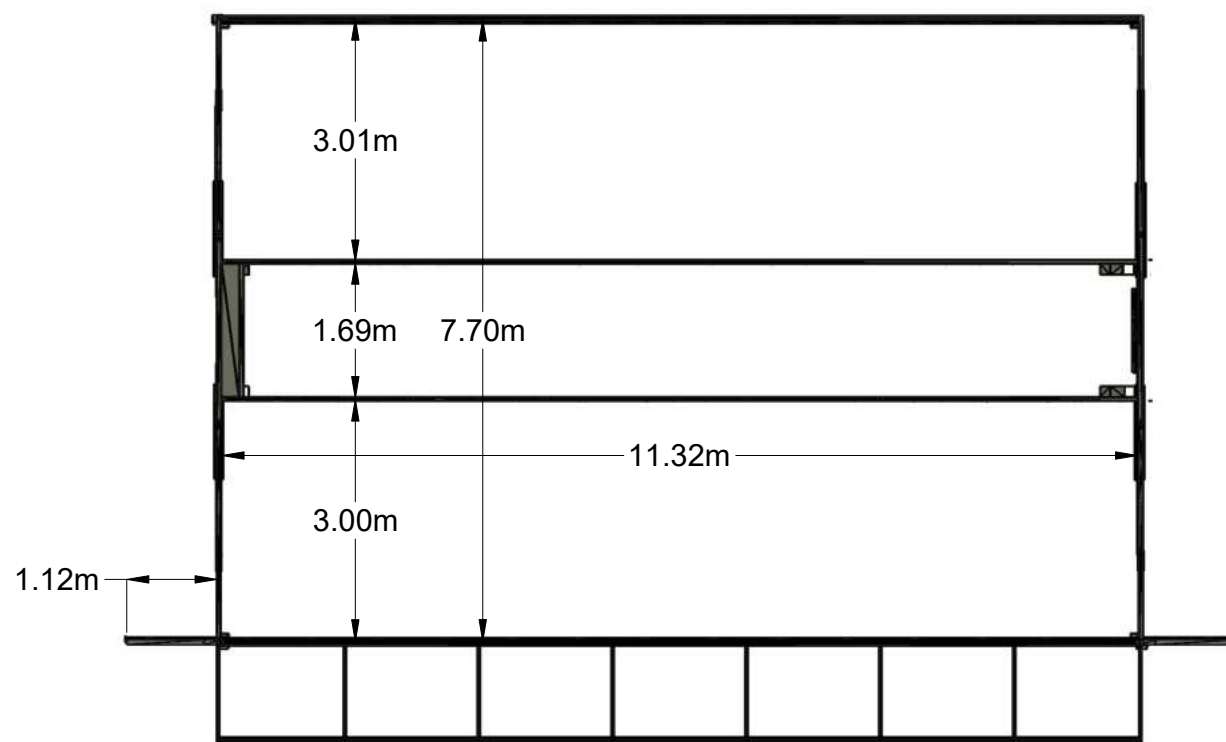


Information M80:

- Clearance: 7.5m
- Main Floor: 11.5 x 7m
- Stage Floor height: 1.4 to 2m
- Optional 4x3m Front of House available
- Integrated SideStages available



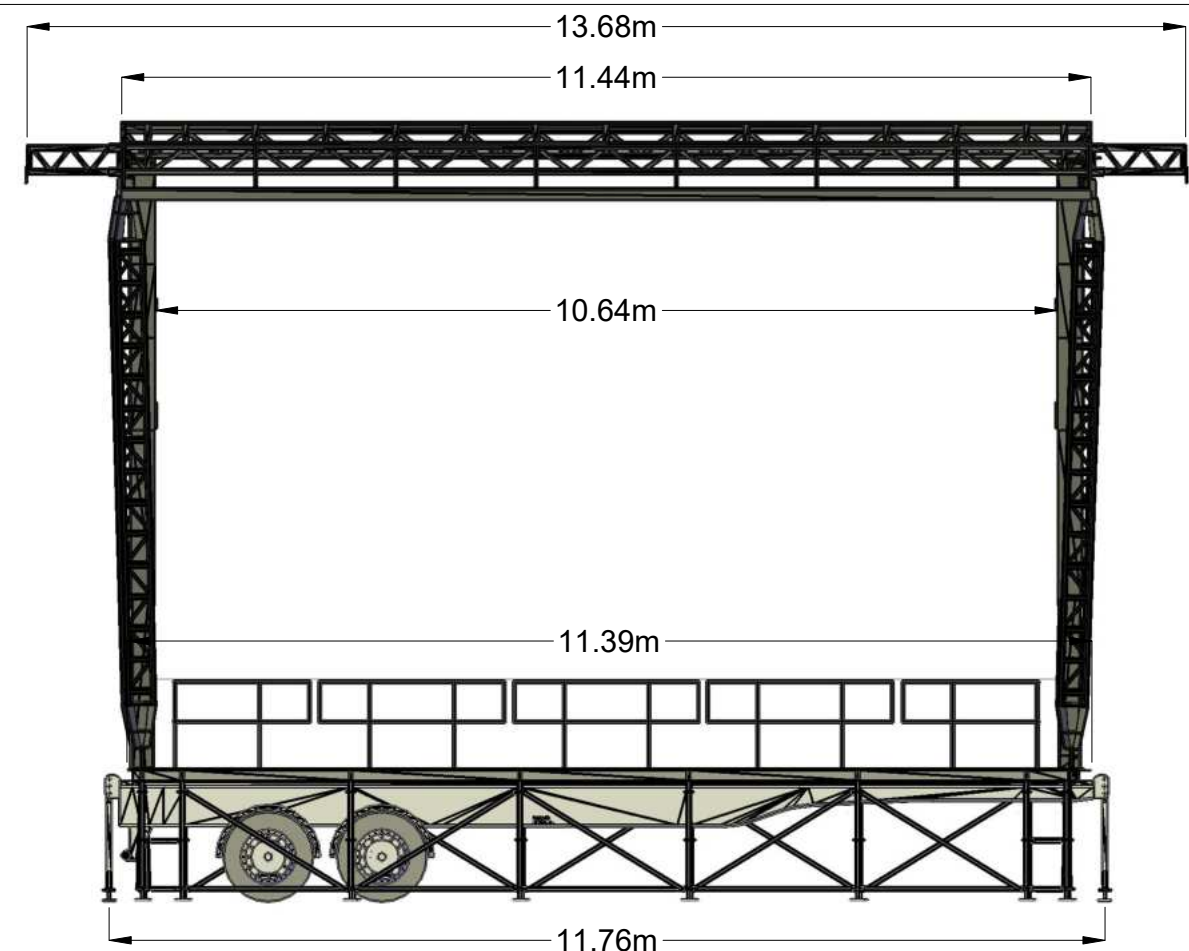


Rigging Structure

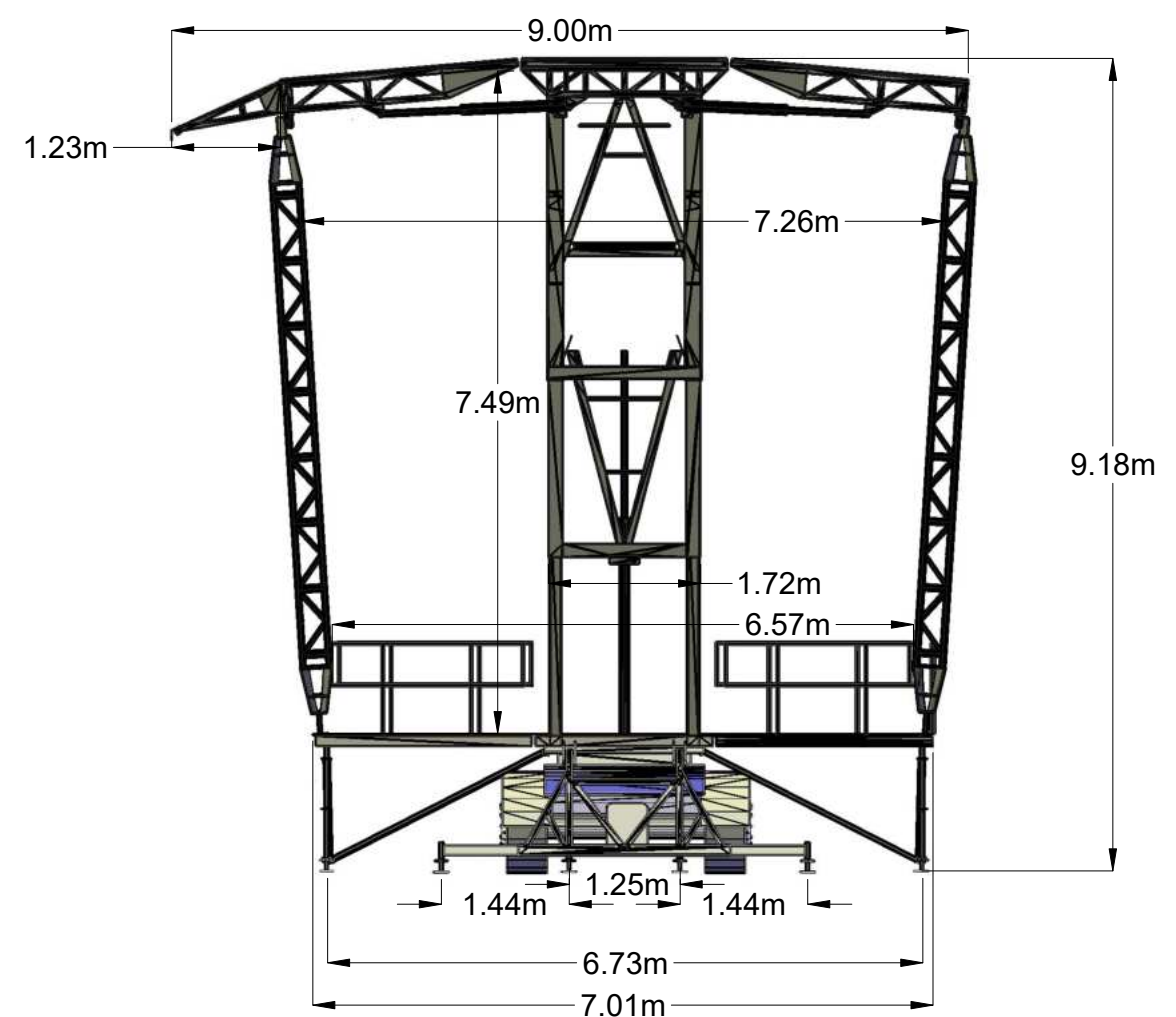
Rigging Information M80:

- Total rigging capacity: 10 tons in optimal loading configuration !
- Rigging capacity PA wings: 1 ton each

Every rigging plan must be validated by ASE before hanging lights and sound equipment!



Front View



Side View