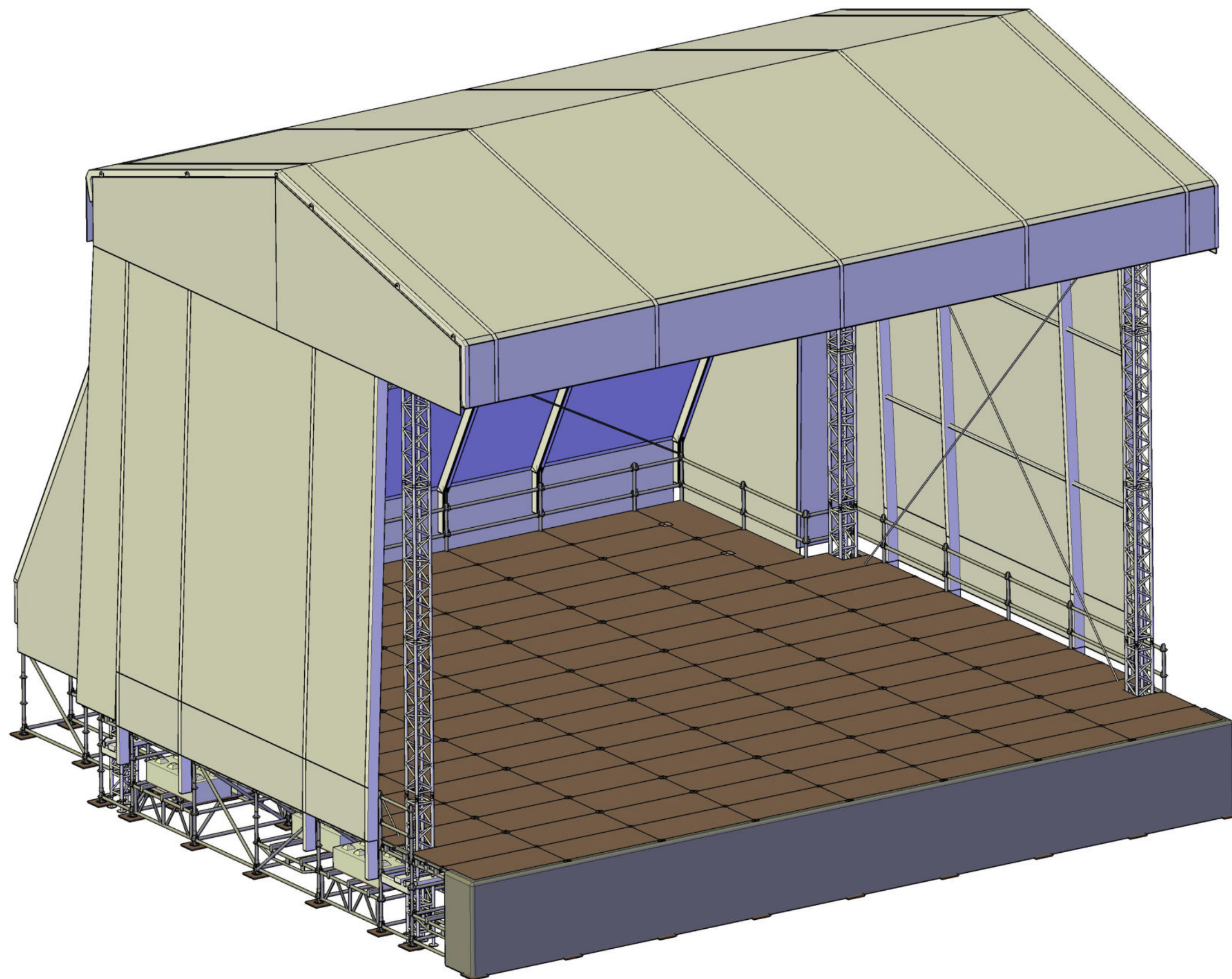
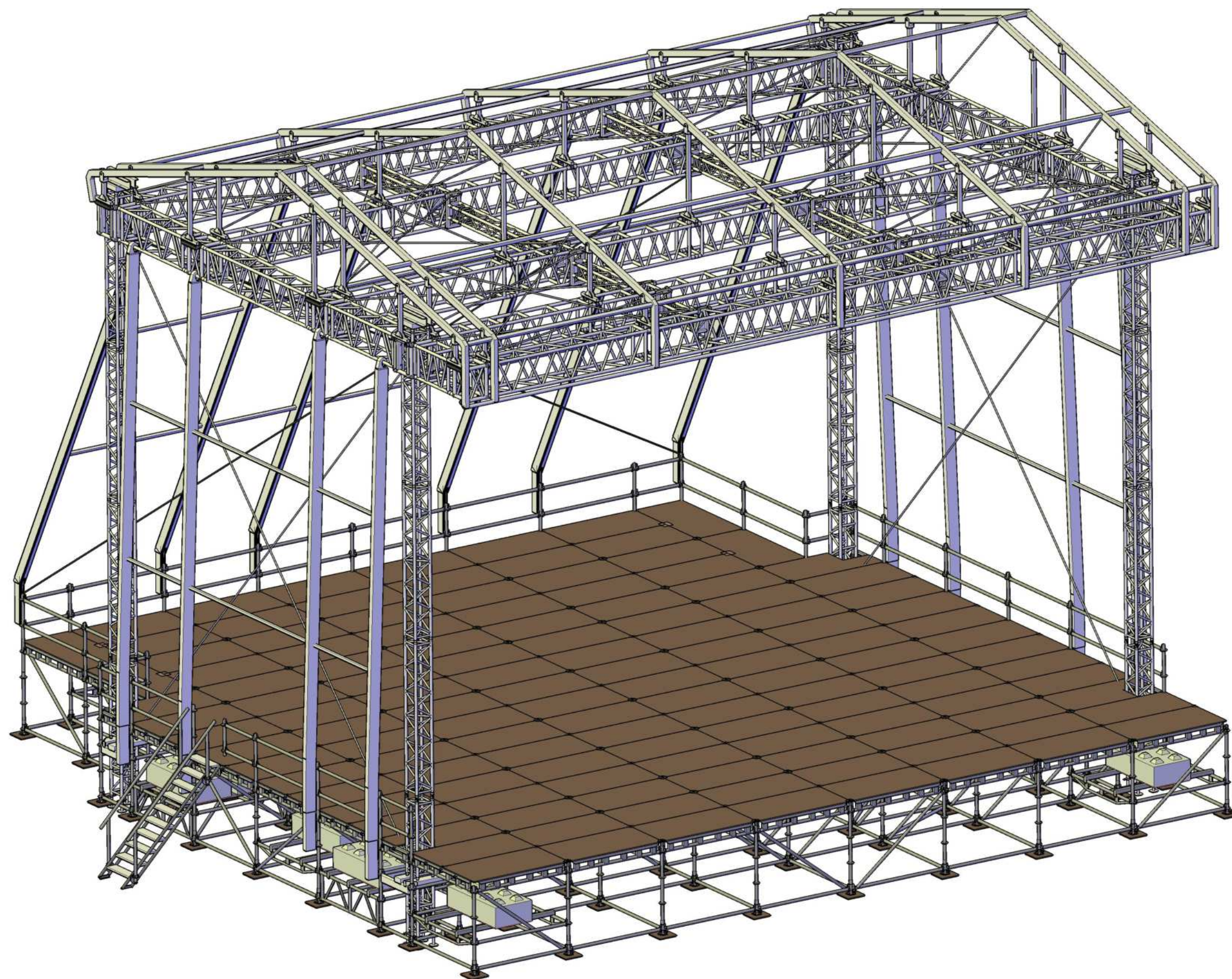


ASE **GS350**
ALL STAGE EQUIPMENT **16.56 x 12.42m + Backstage 14.5 x 4.14m**

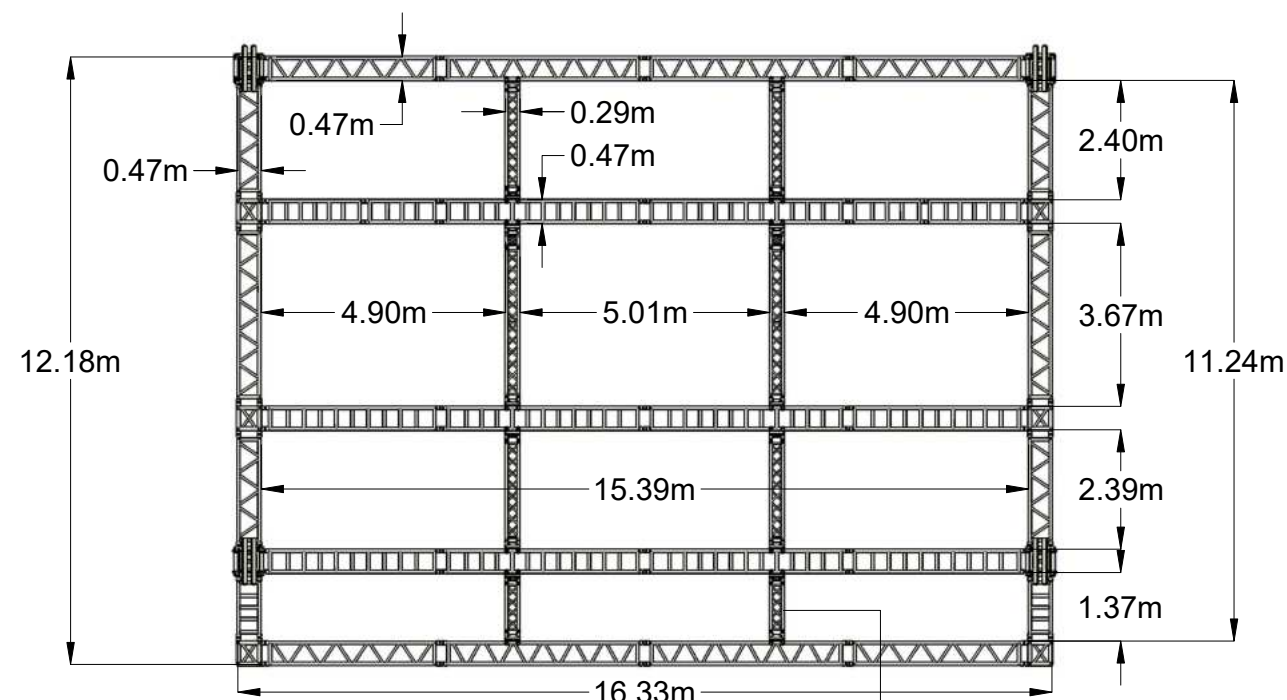


ASE **GS350**
ALL STAGE EQUIPMENT **16.56 x 12.42m + Backstage 14.5 x 4.14m**



ASE **GS350**
ALL STAGE EQUIPMENT

16.56 x 12.42m + Backstage 14.5 x 4.14m



Rigging Structure

Compression trusses cannot bear any loads

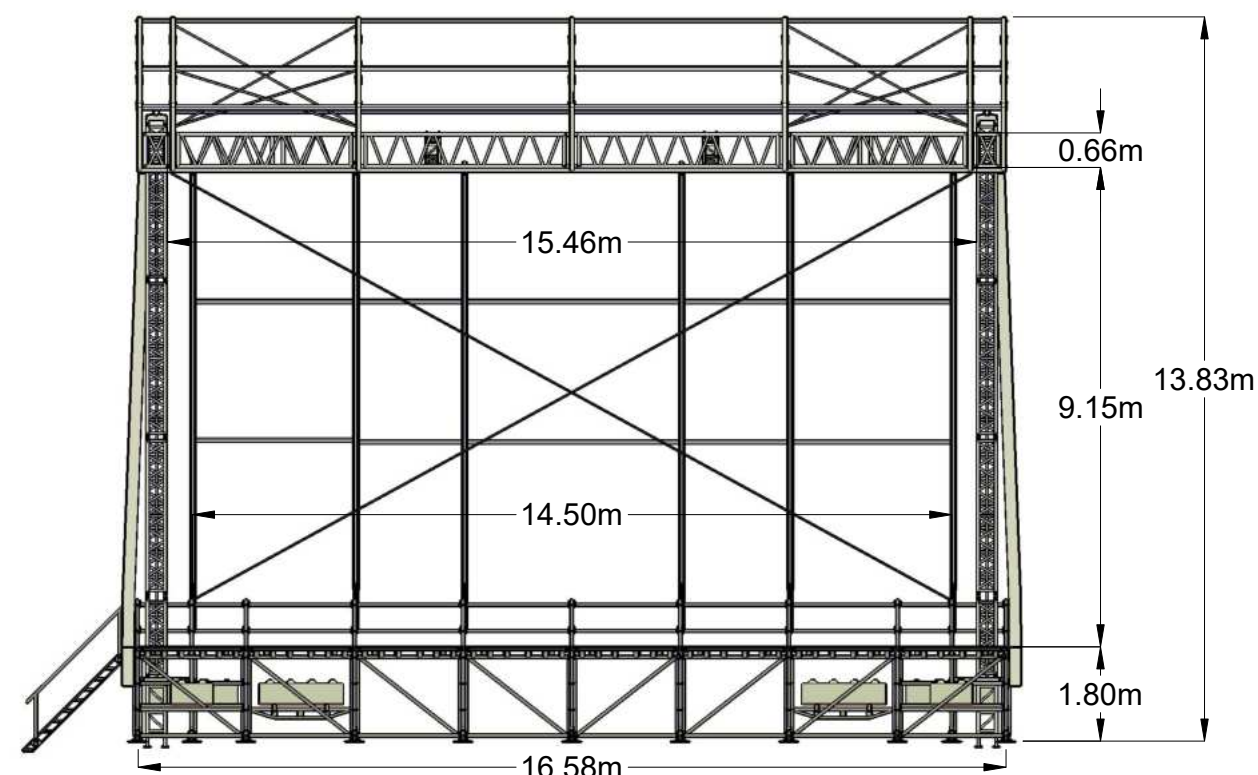
Rigging Information:

- Clearance: 9.2m
- Loading capacity: 8.2 tons in optimal loading configuration
- Optional extra column for extra Loading capacity
- Contact ASE for further detailed information

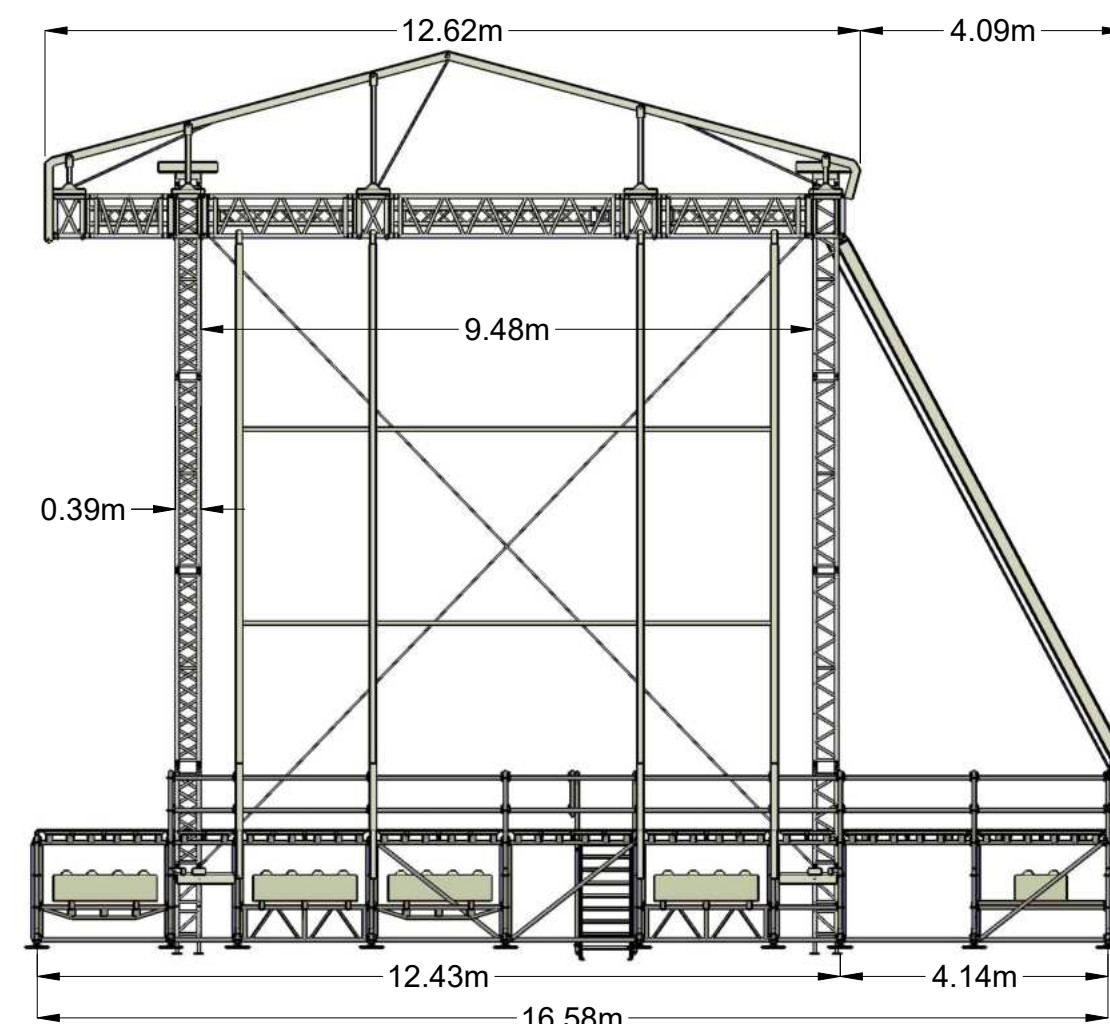
Advantages GS350:

- Optional integrated SideStages / Backstage
- Optional Wings available for banners / Line-Array / LED-Screens
- Placing a canopy banner is possible
- Large Clearance

Every rigging plan must be validated by ASE before hanging lights and sound equipment!



Front View



Side View