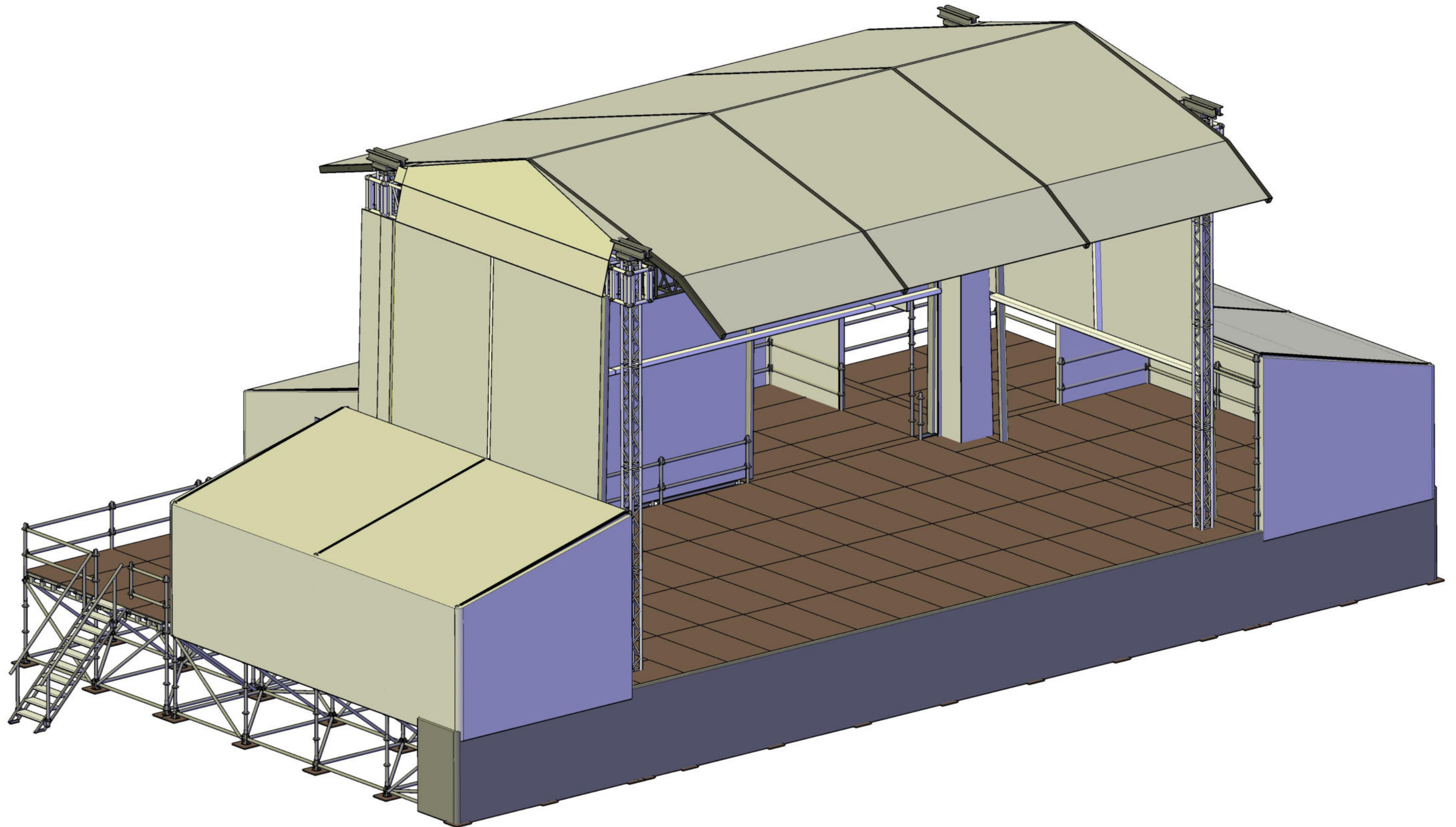




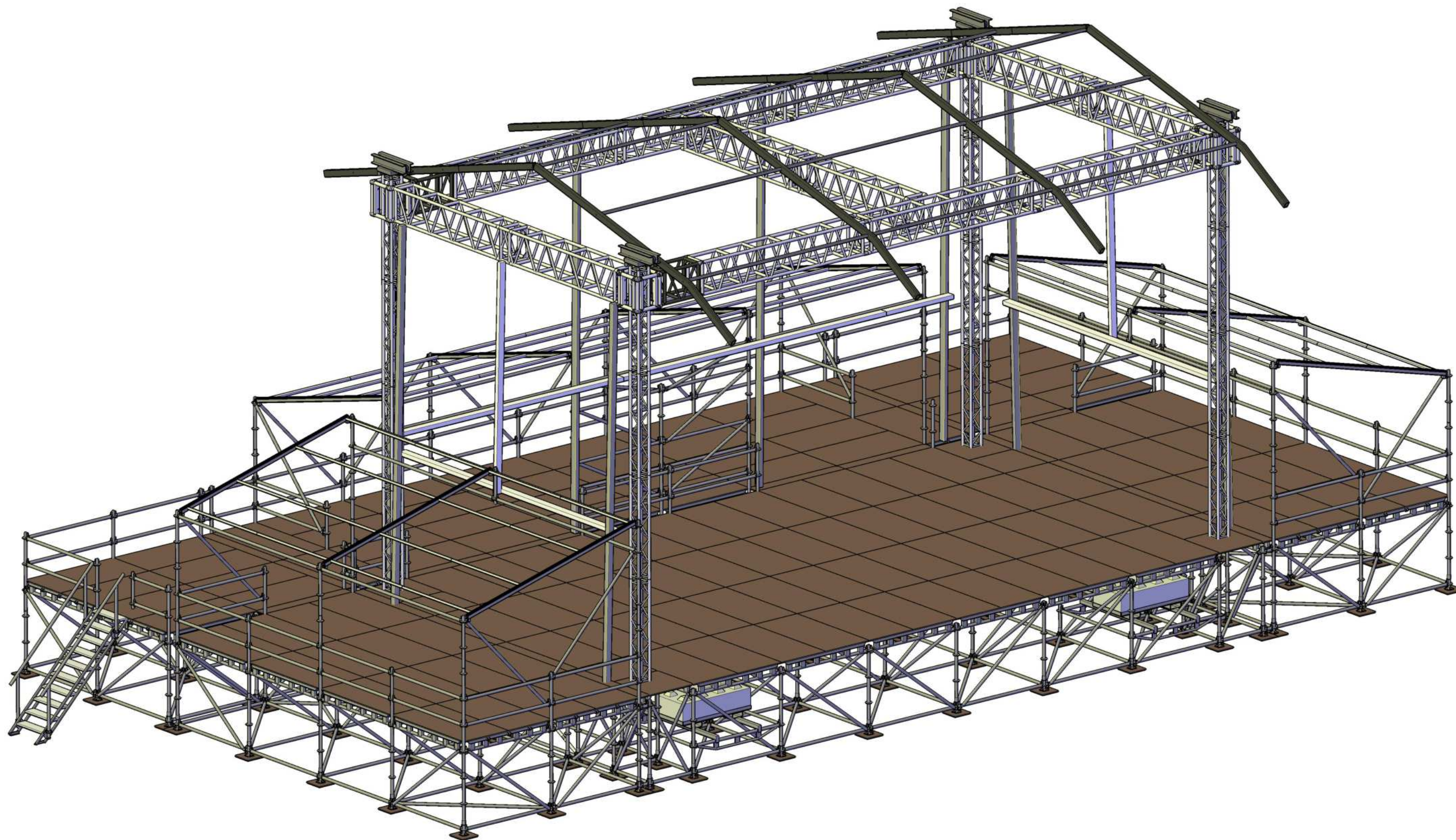
GS120
14x8m + SideStages 8.28 x 4.14m + Backstage 12.42 x 4.14m + Connection platforms





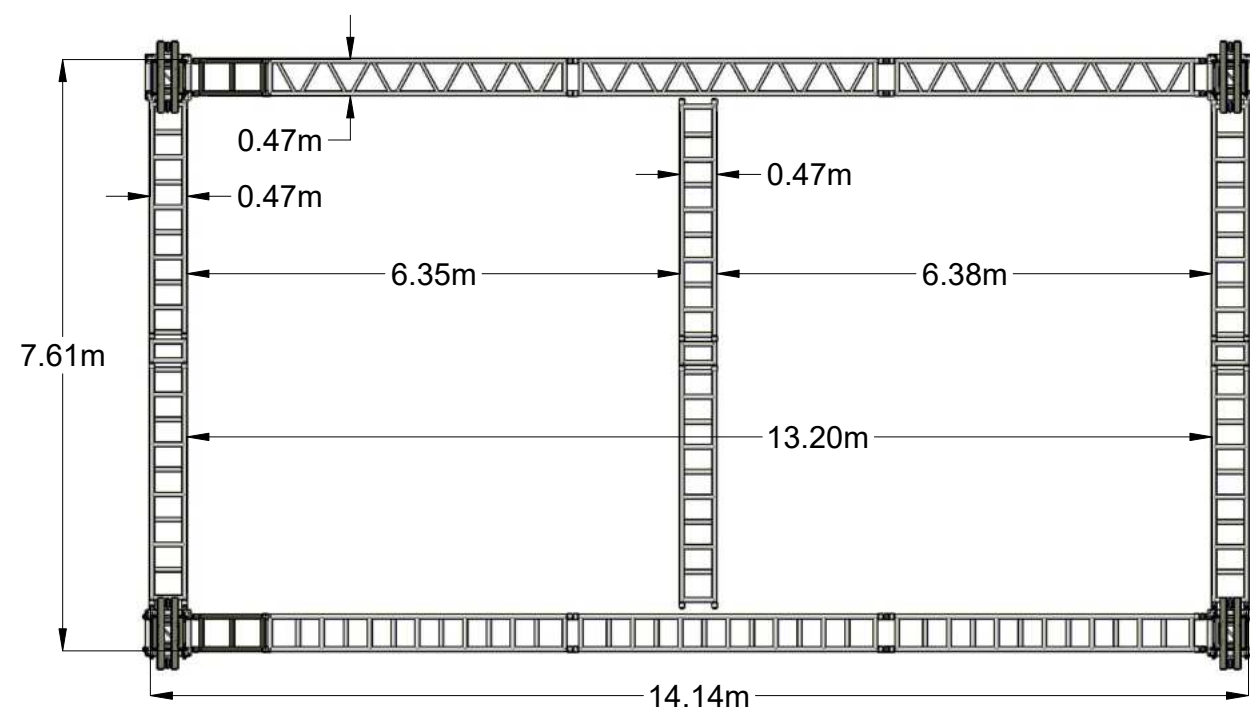
GS120

14x8m + SideStages 8.28 x 4.14m + Backstage 12.42 x 4.14m + Connection platforms





**14x8m + SideStages 8.28 x 4.14m
+ Backstage 12.42 x 4.14m + Connection platforms**



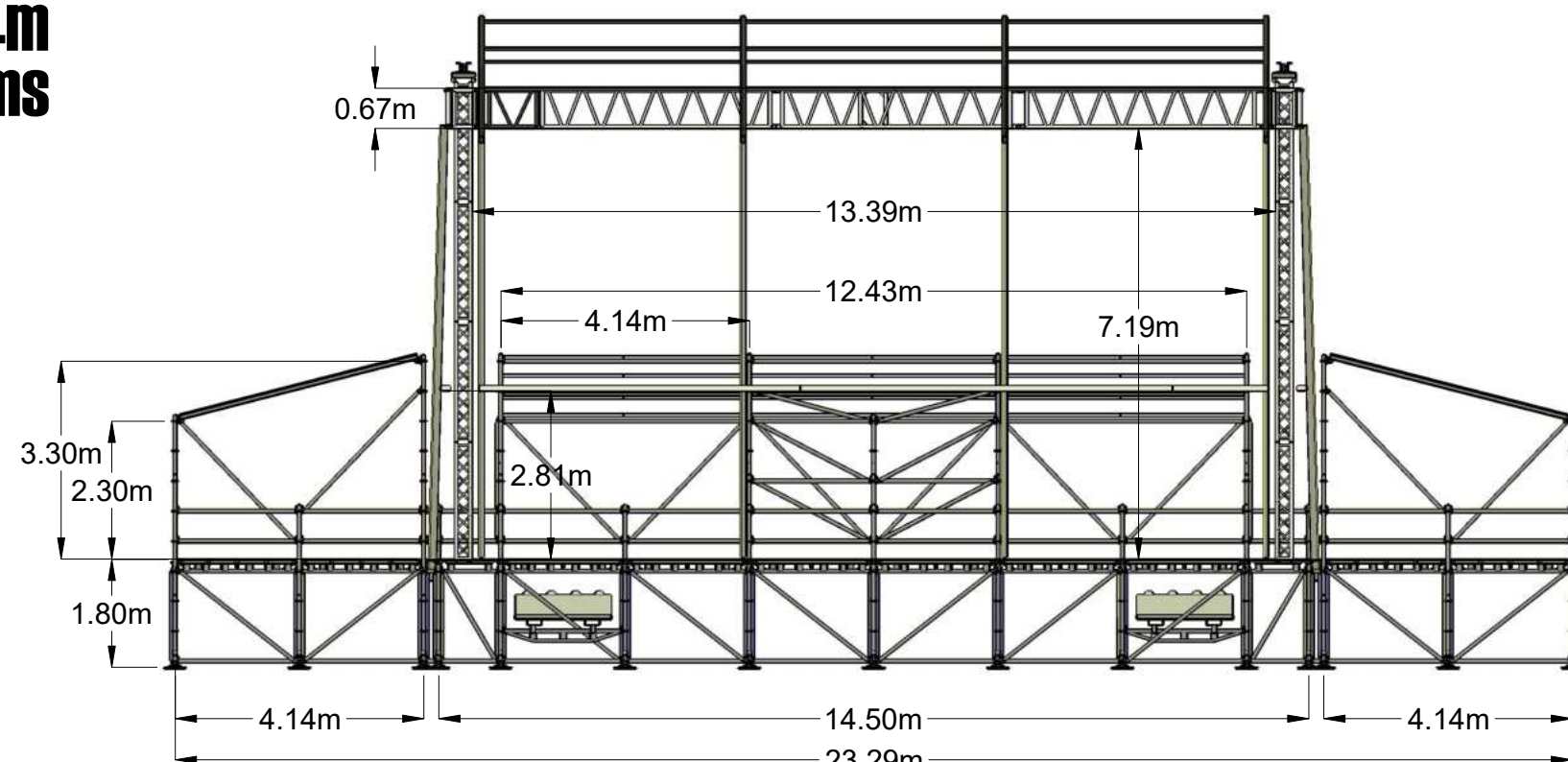
Rigging Structure

Rigging Information:

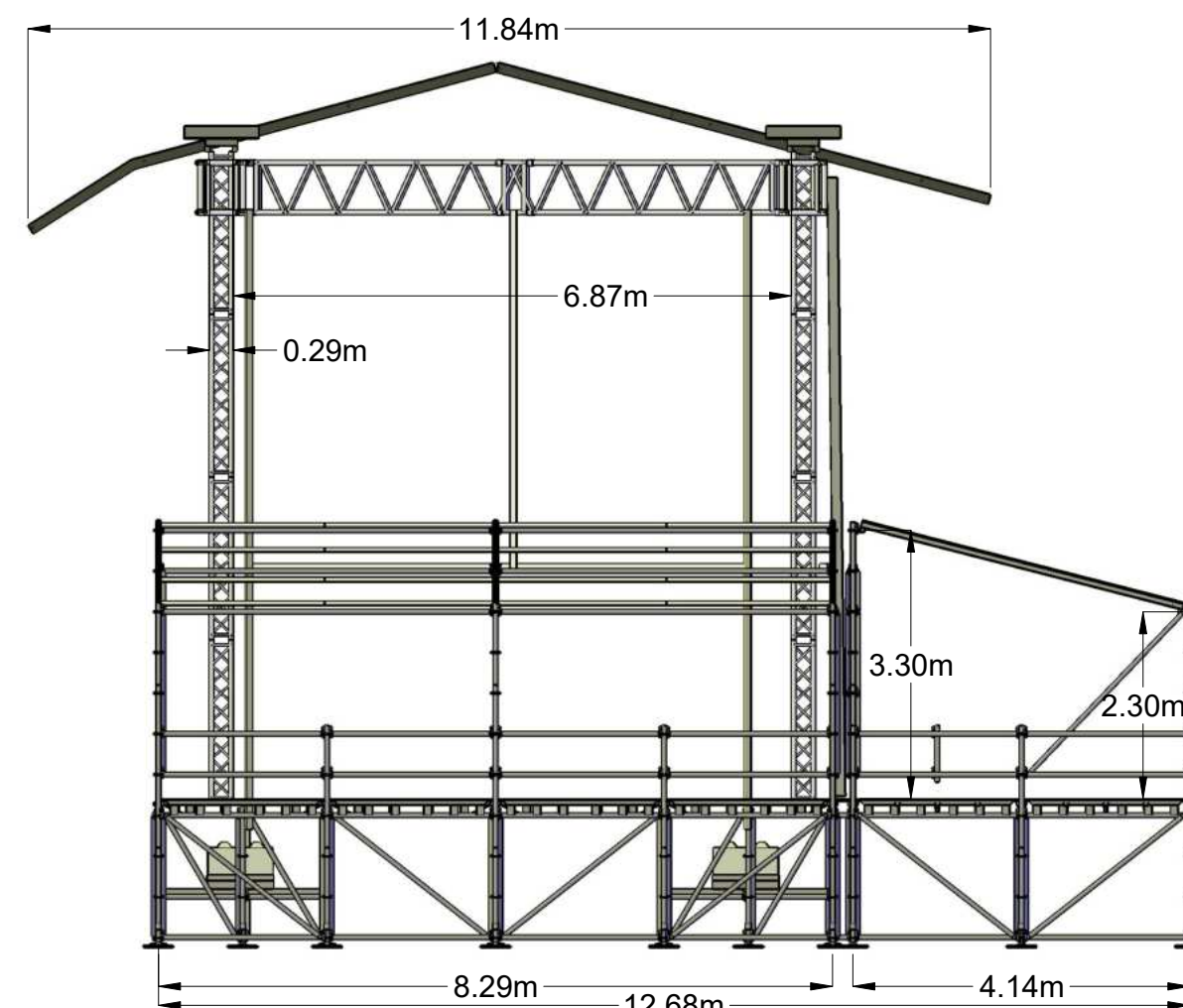
- Clearance: 7.2m
- Loading capacity: 4 tons in optimal loading configuration
- Optional extra column for extra Loading capacity
- Contact ASE for further detailed information

Advantages GS120:

- Multiple Surface Configurations
- Optional Sidestages and Backstage
- Large Clearance



Front View



Side View

Every rigging plan must be validated by ASE before hanging lights and sound equipment!