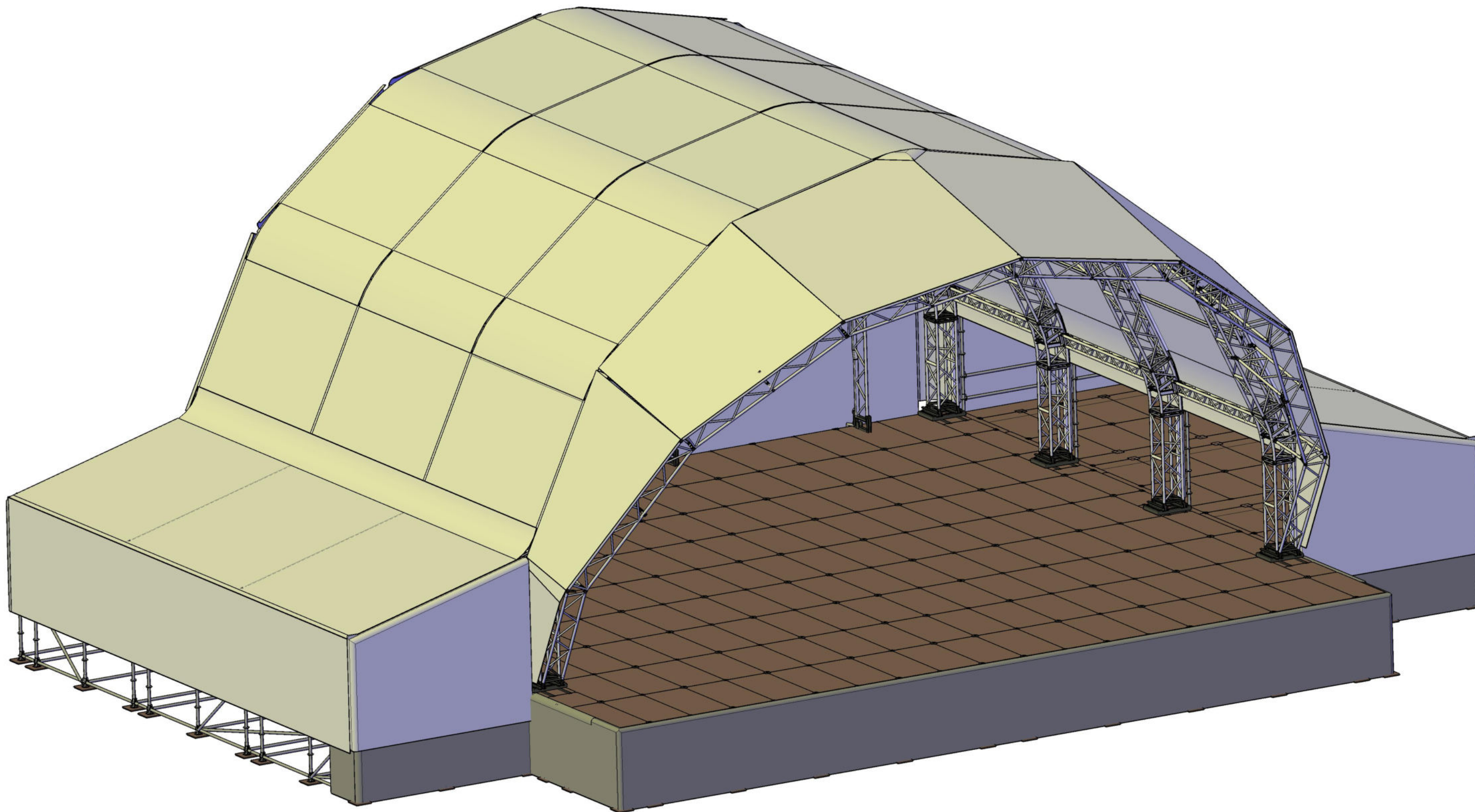




**ASE**  
ALL STAGE EQUIPMENT

# Arch Stage

**19 x 18.5m + SideStages 14.4 x 4.14m**



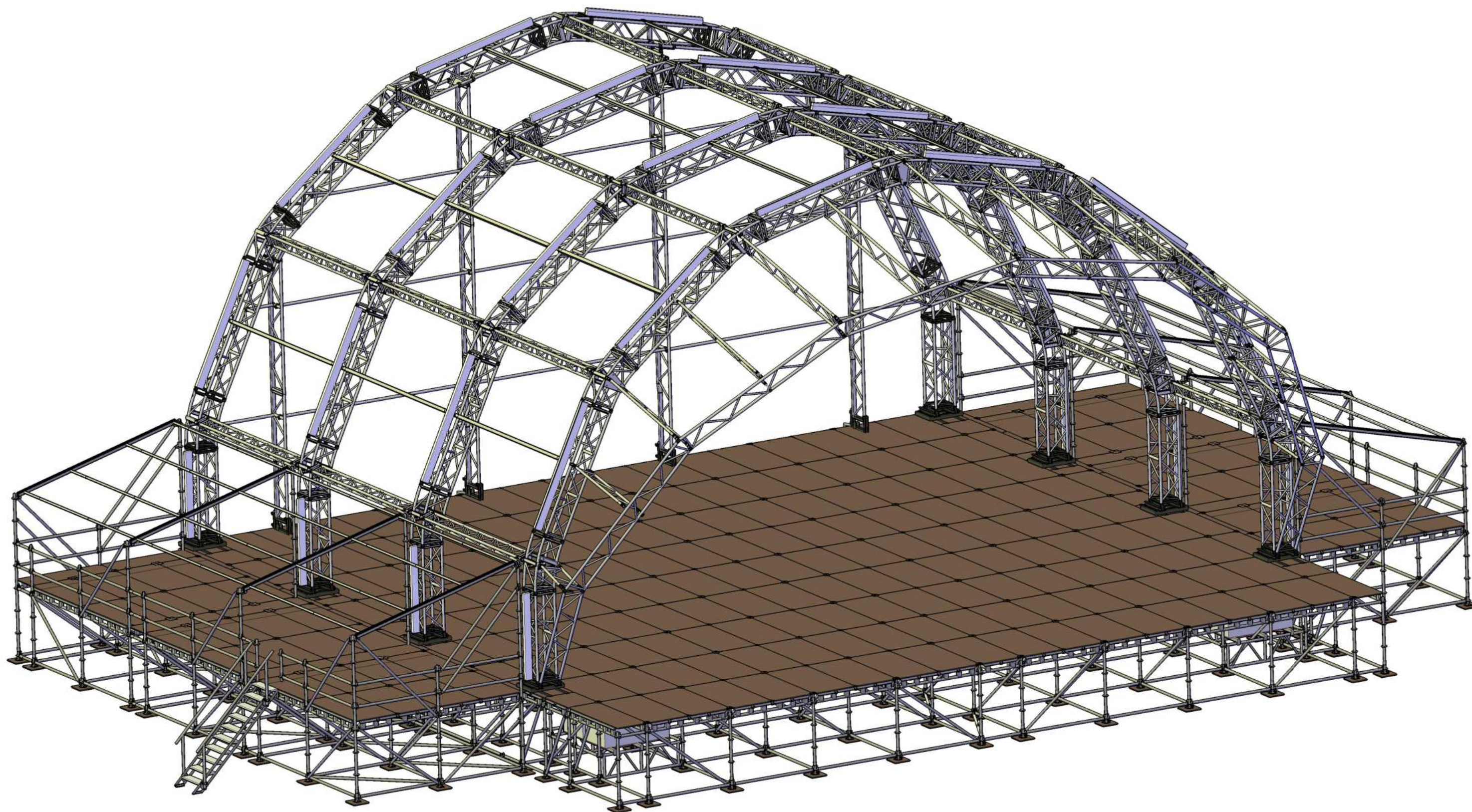




**ASE**  
ALL STAGE EQUIPMENT

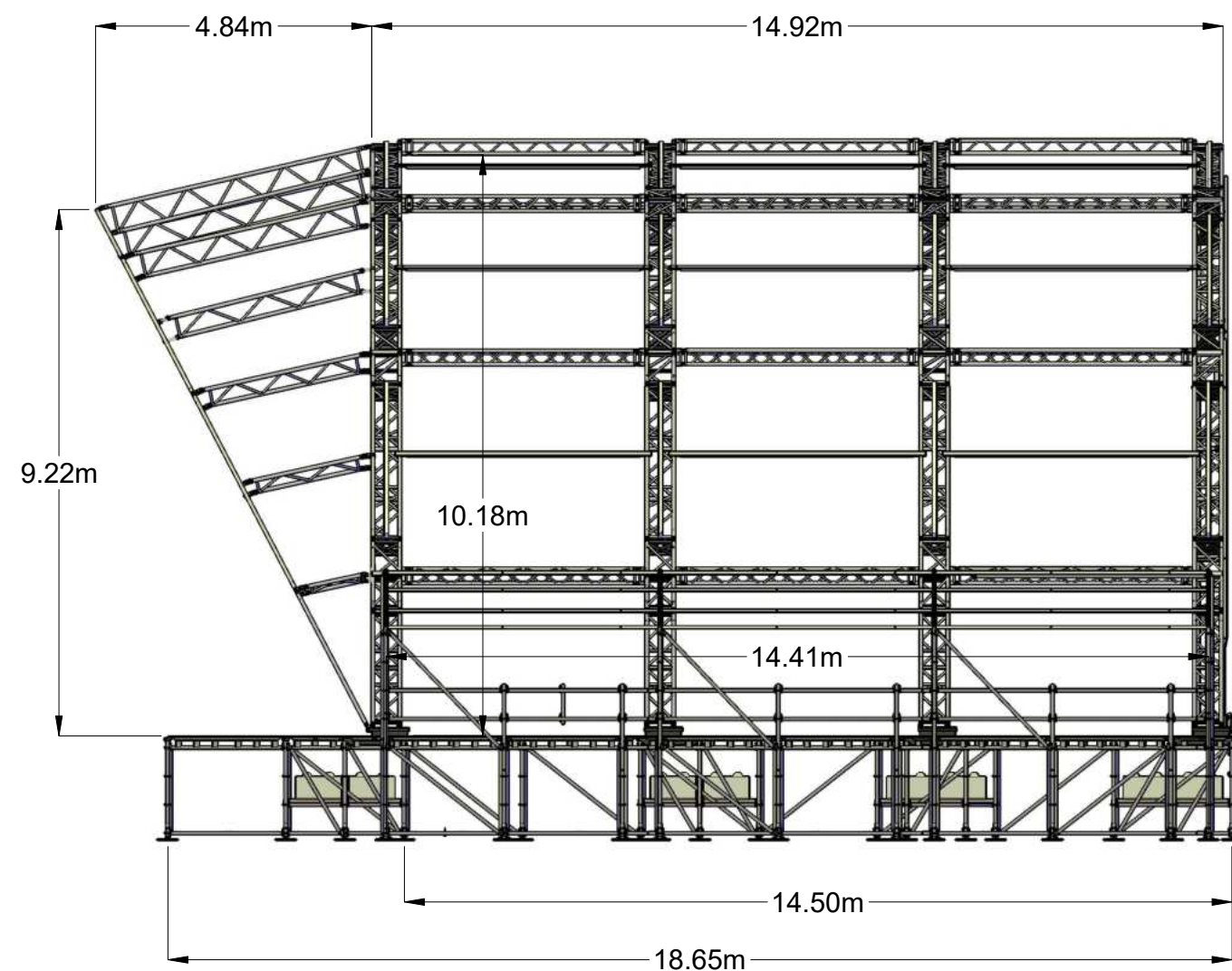
# Arch Stage

**19 x 18.5m + SideStages 14.4 x 4.14m**

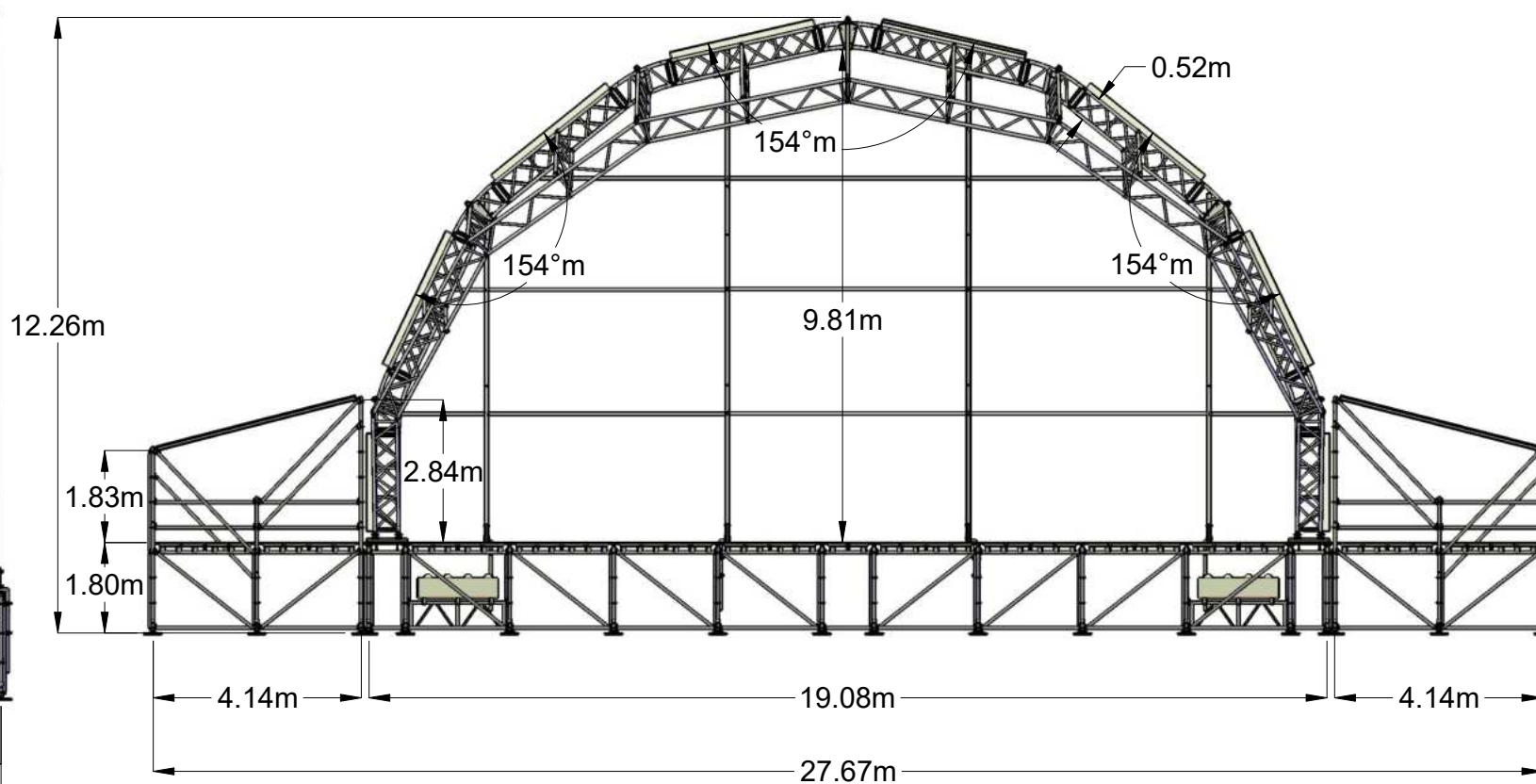




**ASE** ALL STAGE EQUIPMENT **Arch Stage**  
**19 x 18.5m + SideStages 14.4 x 4.14m**



**Side View**



**Front View**

**Advantages Arch Stage:**

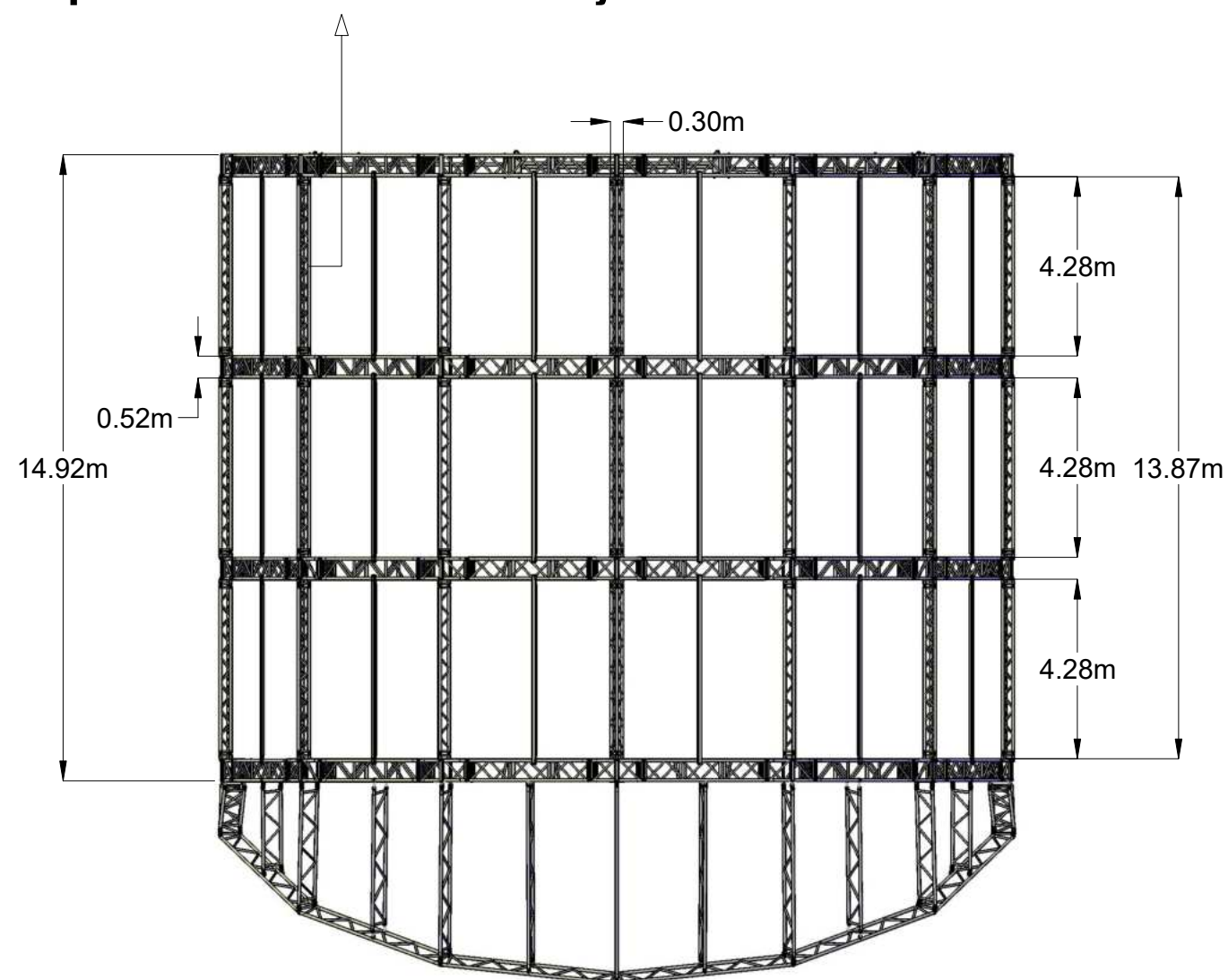
- **Aesthetic appeal**
- **Optional transparent covers**
- **Flexible Configuration: 19 x 18.5m ; 19 x 13.5m ; with or without SideStages**



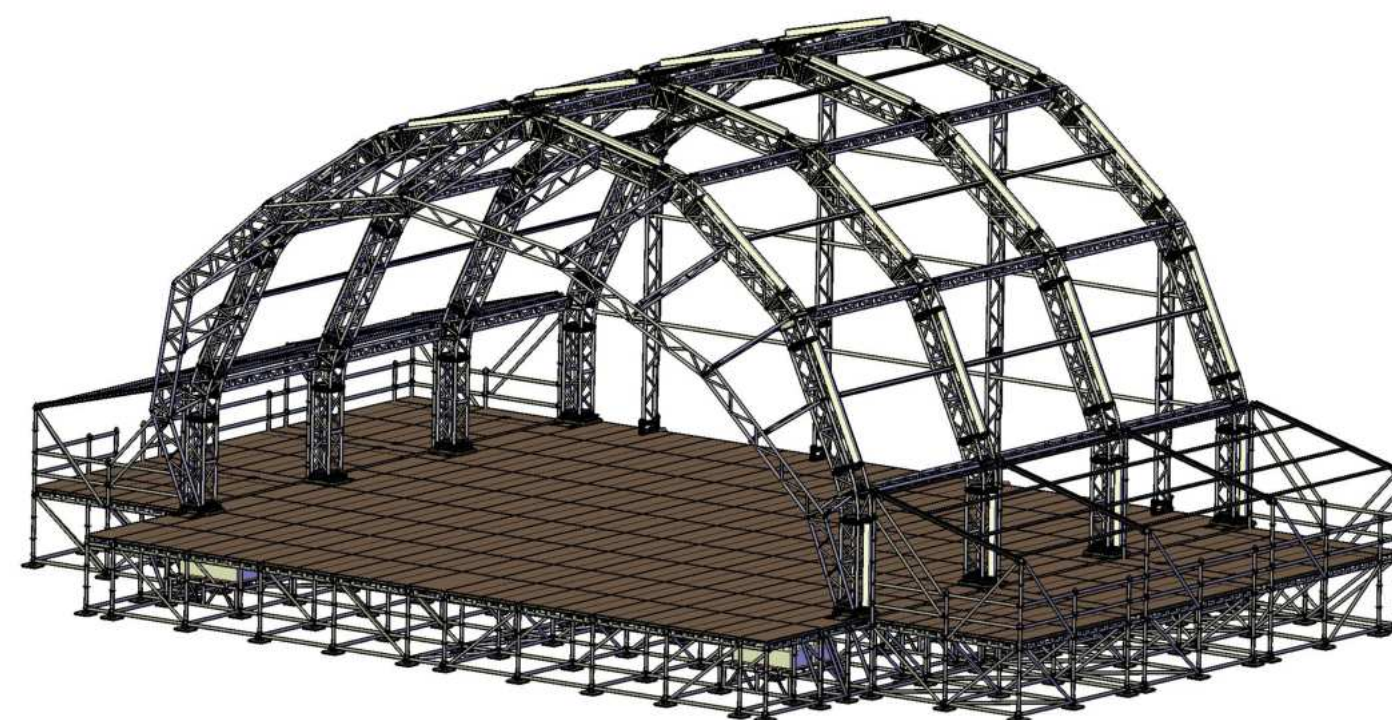
# Arch Stage

19 x 18.5m + SideStages 14.4 x 4.14m

**Compression Trusses should not bear any loads**



**Rigging Structure**



**ISO**

## **Rigging Information:**

- **Clearance in the centre: 9.8m**
- **Loading capacity per Arch: 2 tons**
- **Loading capacity per Node: 500kg**
- **Contact ASE for further detailed information**

**Every rigging plan must be validated by ASE before hanging lights and sound equipment!**