

# Technical infosheet M120



Covered Mobile stage M120 (12.3m x 10m)  
Top, back en sides with canopy grey/black - M2 (fire resistant)

Main floor : 12,30m x 10,12m  
Clearance: 5,40m - Clear span : 12,30m  
Total height (with floor level at 1.40m) : 7,55m  
Floor level variabel : 1,50m to 1,70m  
Front awning : 1,40m

Rigging capacity : details see below

Mounted with stairs and black skirt in front of stage

Rigging structures sound - optional



Front of House 4,14m x 3,07m

Coverd - optional



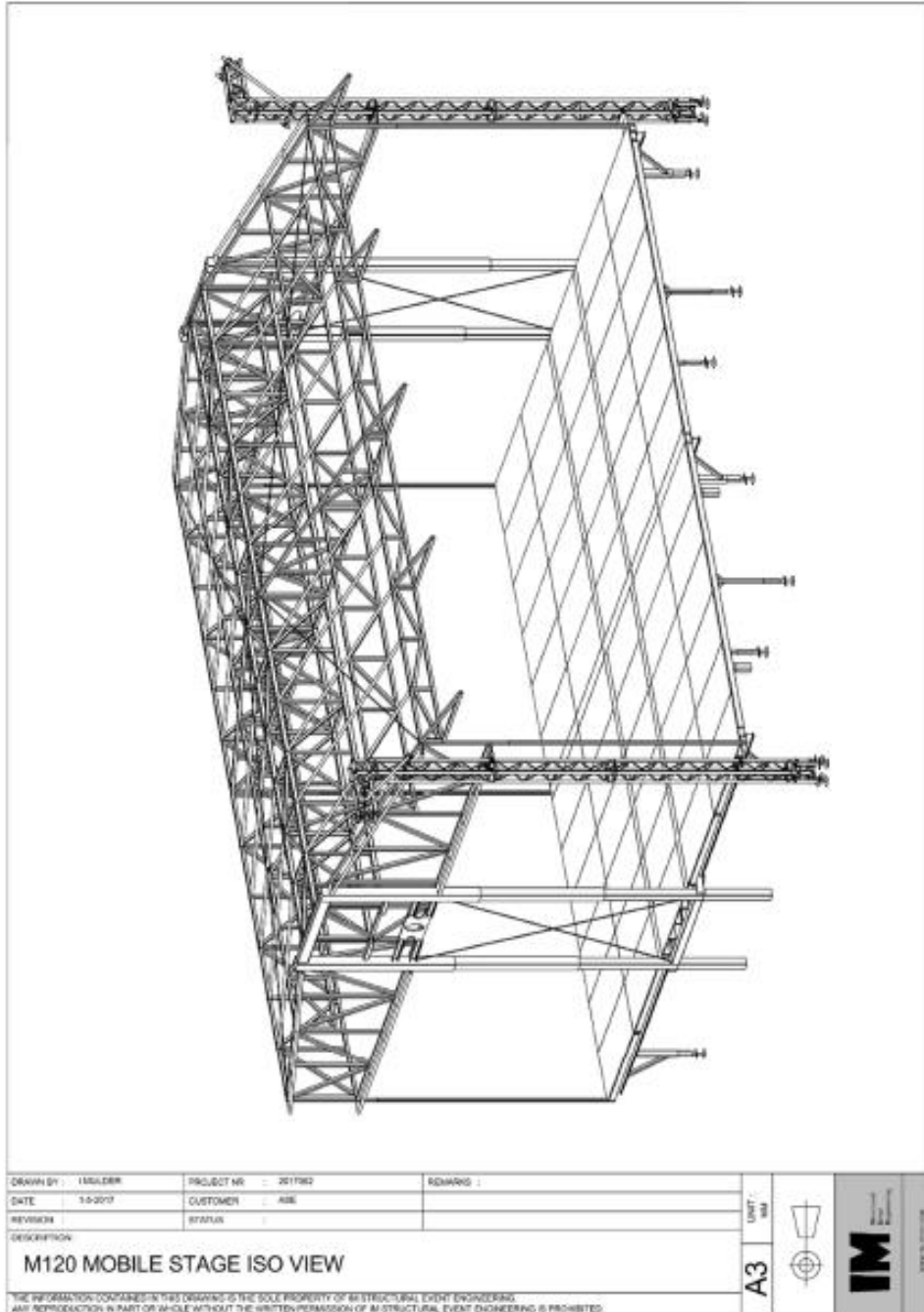
Construction drawings – screenshots from calculation note

Project number : 2017002



**1.2 Construction drawing.**

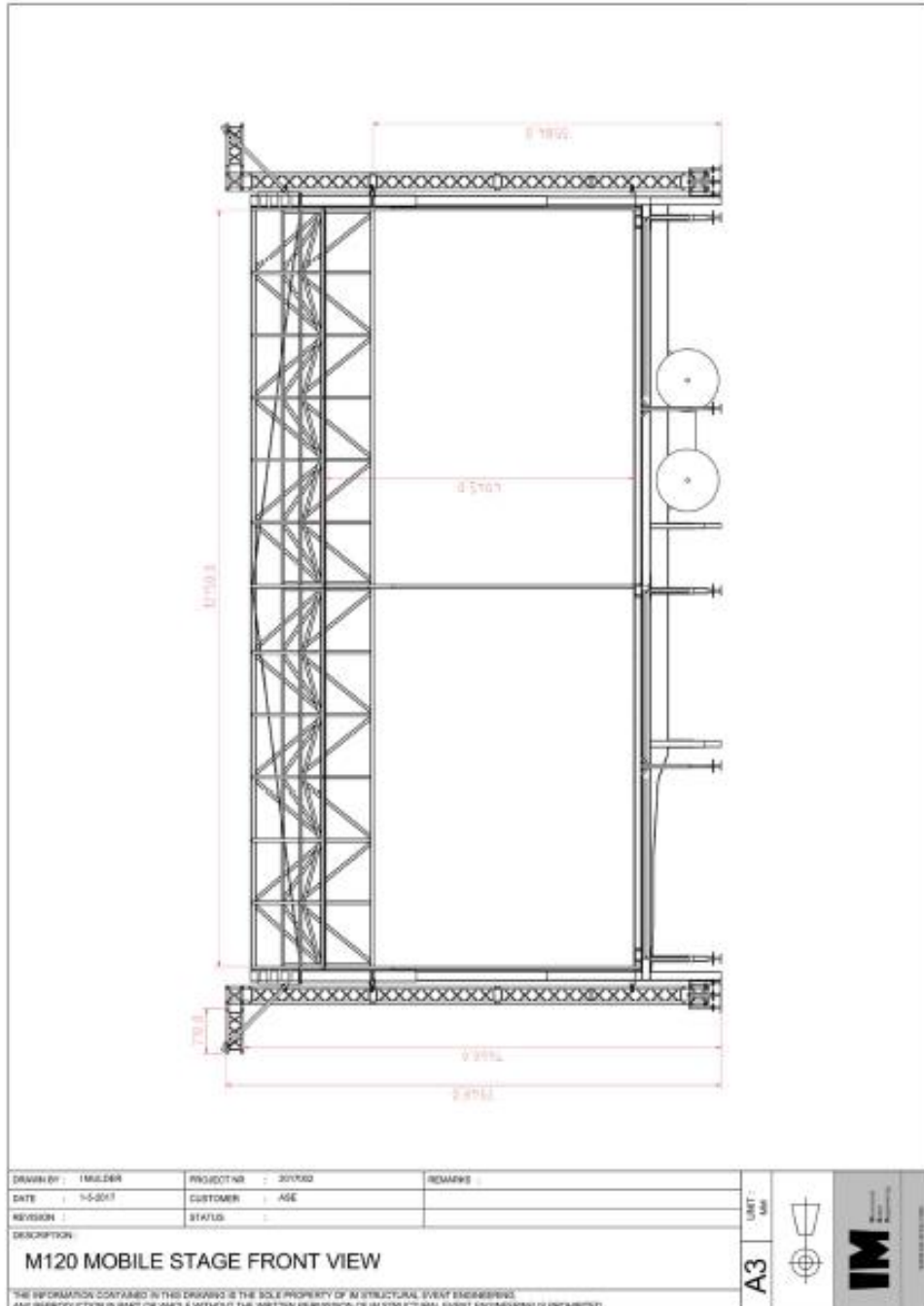
**1.2.1 Perspective**



Project number : 2017002



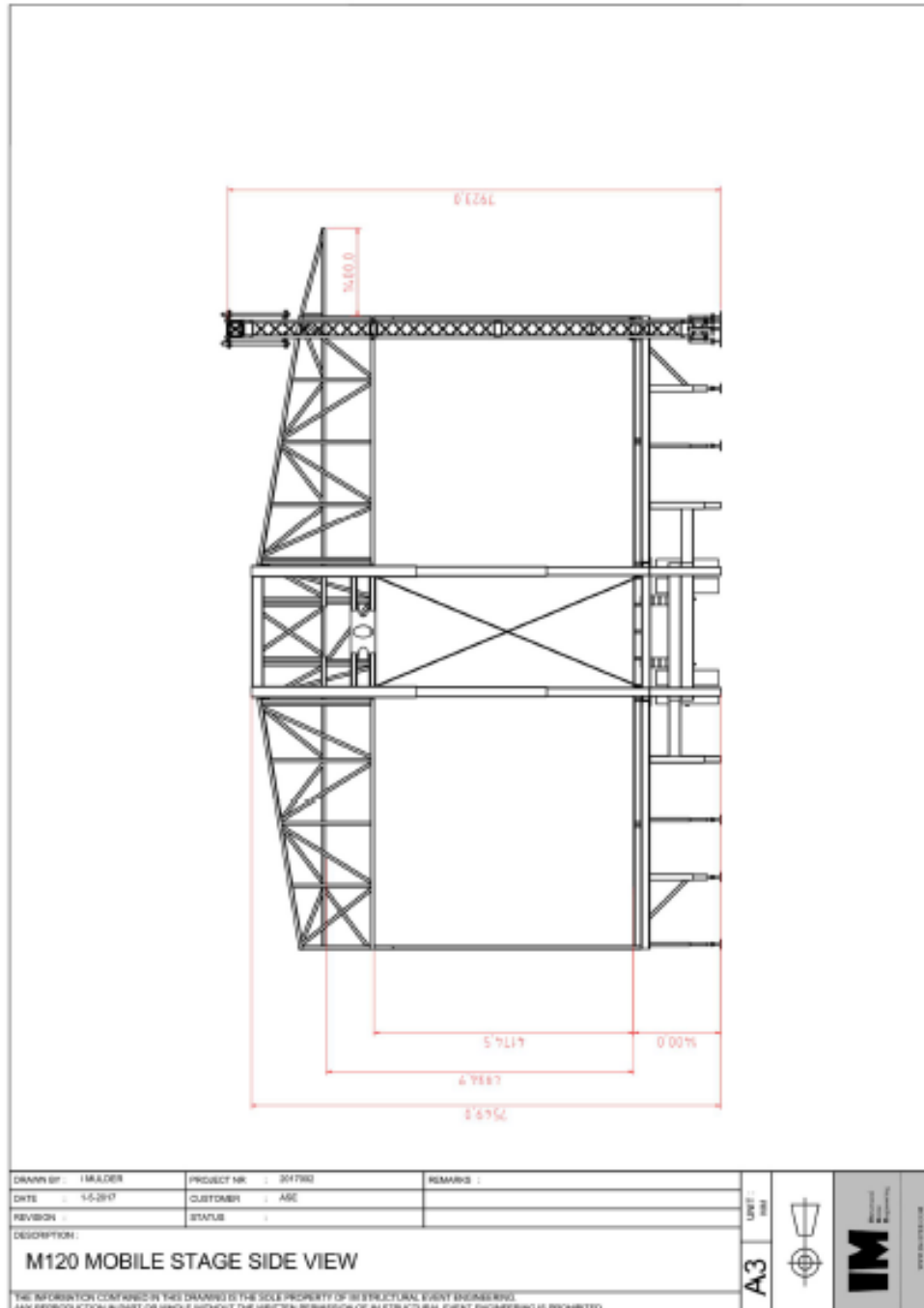
1.2.2 Front view



Project number : 2017002



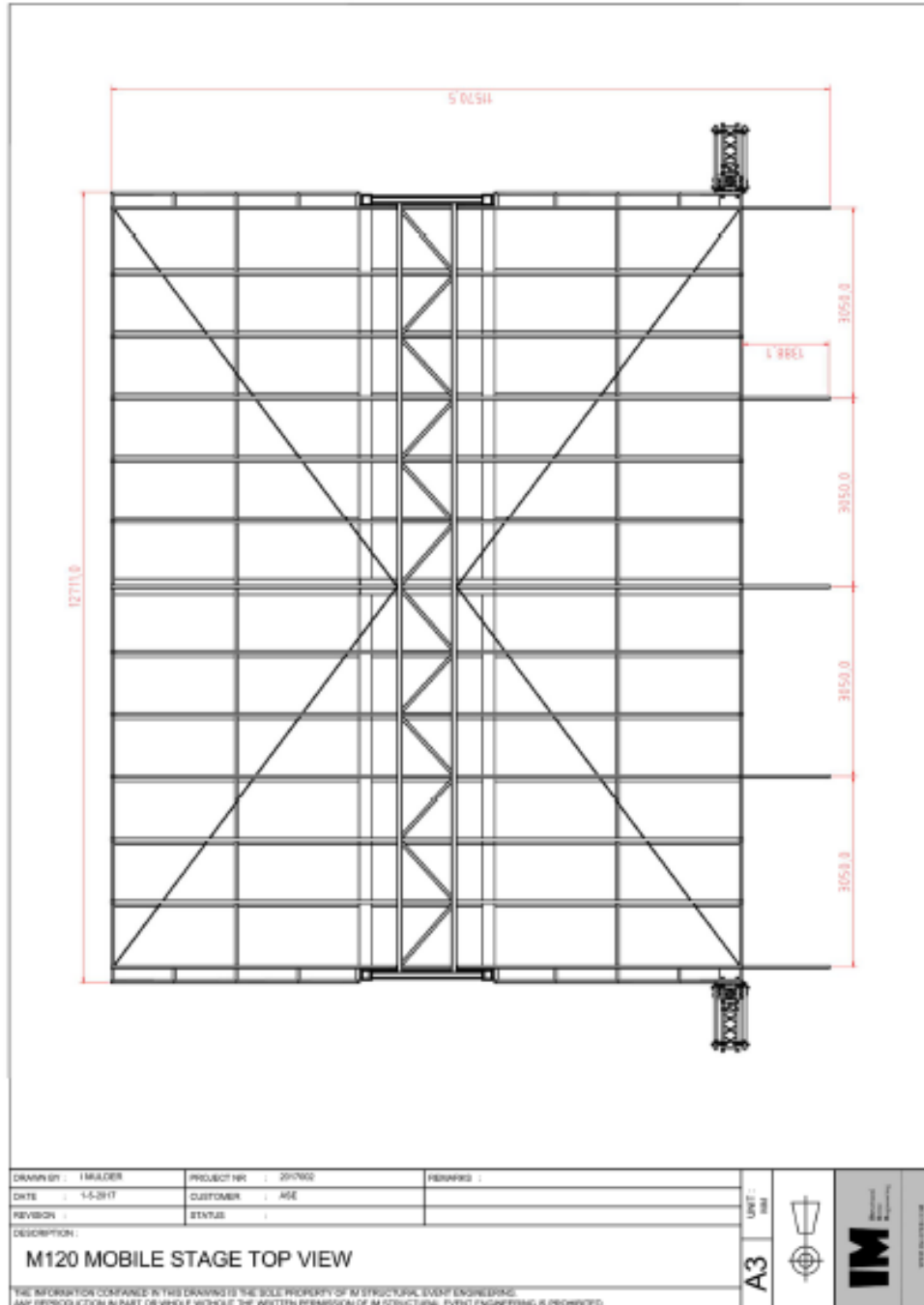
1.2.3 Side view



Project number : 2017002



1.2.4 Top view

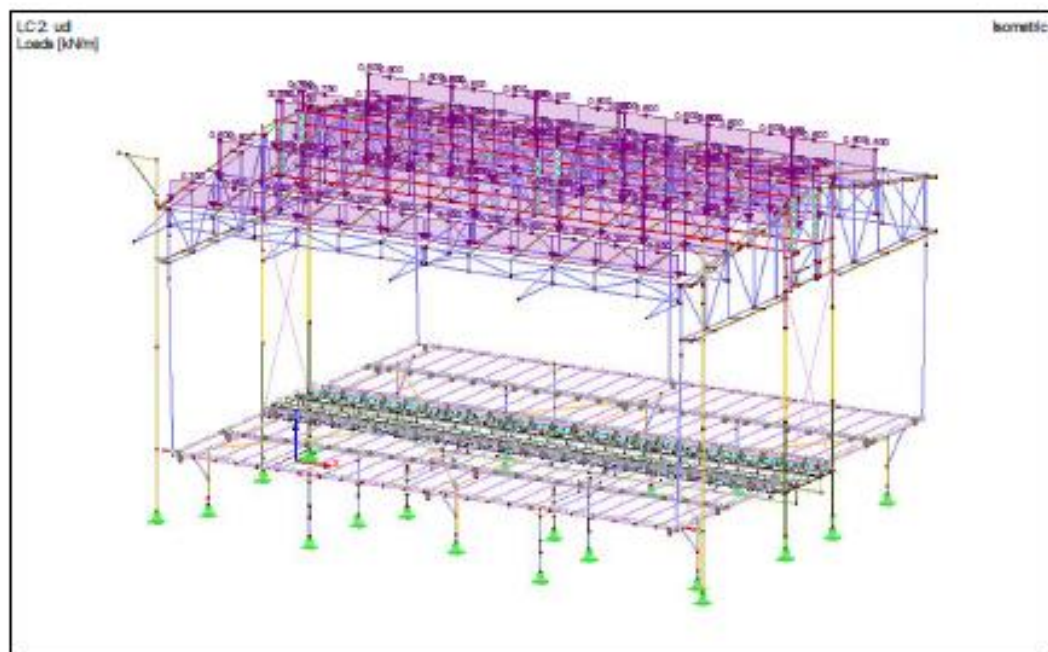


Project number : 2017002

### 1.7 Loading Configurations.

The calculation of the roof system has been done with 3 different load cases and a separate load case for the PA load. The three load cases are Uniform distributed load , Center point load, point loads in the third point. In the In-service situation each main roof loading setup can be combined with the PA loading. In the Out-service situation the PA need to be derigged from the roof, the loading of the main roof can stay in the roof. This is also taken into account in this calculation.

#### 1.7.1 UDL Loading setup



Uniform distributed load along the main span.

Span 1 = 35 kg/m

Span 2 = 60 kg/m

Span 3 = 2 \* 75 kg/m

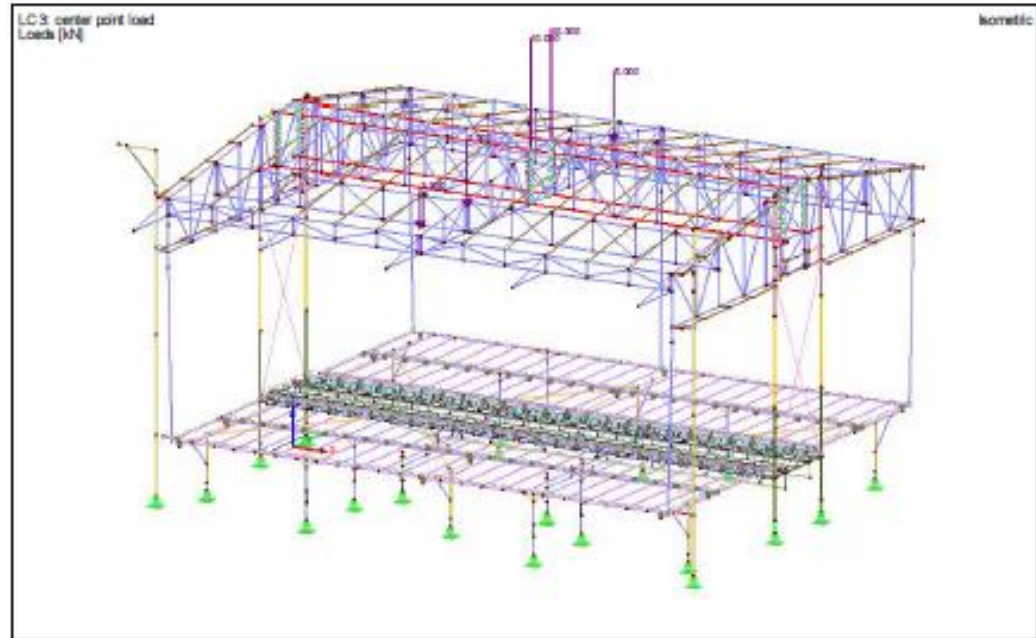
Span 4 = 60 kg/m

The total load on the main system is ~ 3750 kg

Project number : 2017002



### 1.7.2 Center point load



Center point loading of the span.

Span 1 = 300 kg

Span 2 = 500 kg

Span 3 = 2 \* 1000 kg

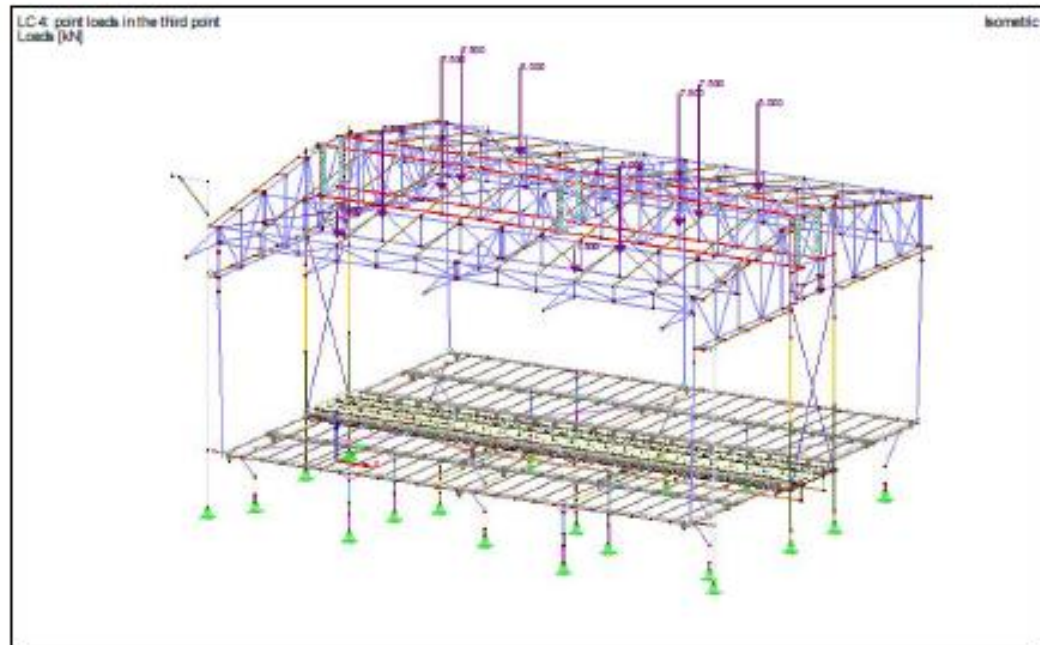
Span 4 = 500 kg

The total load on the main system is ~ 3300 kg

Project number : 2017002



### 1.7.3 Point loads in the third point



Point loads in the third point.

Span 1 = 2 \* 150 kg

Span 2 = 2 \* 500 kg

Span 3 = 4 \* 750 kg

Span 4 = 2 \* 500 kg

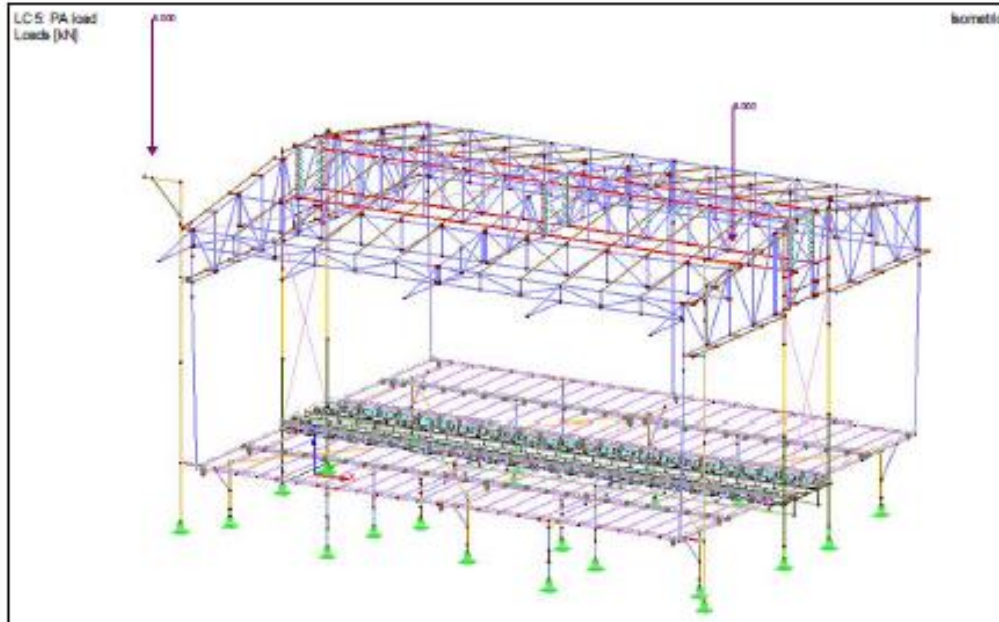
The total load on the main system is ~ 5300 kg



Project number : 2017002



### 1.7.4 PA loading



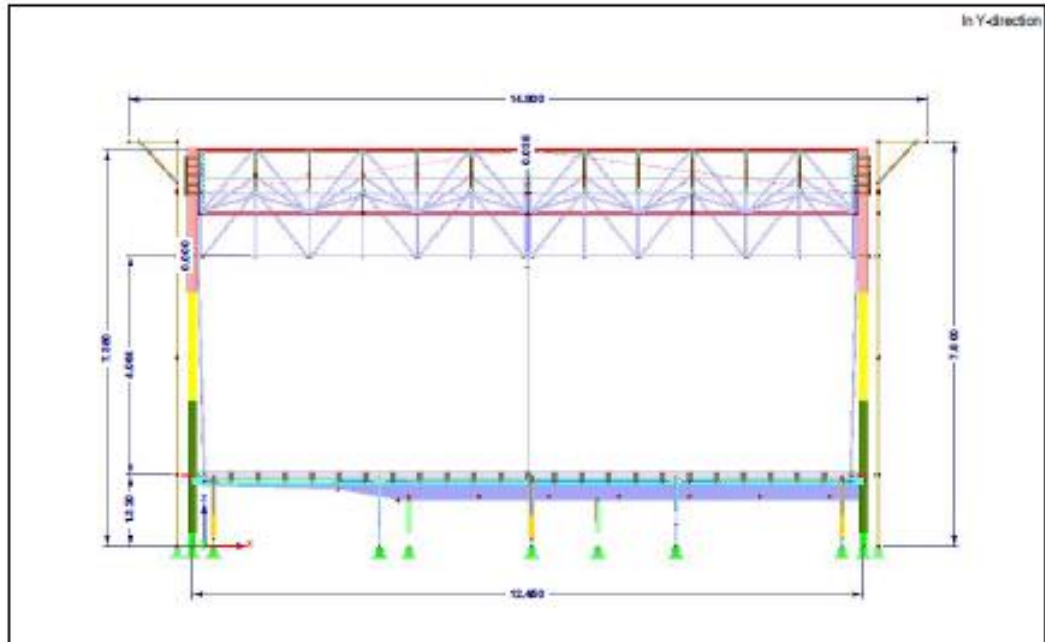
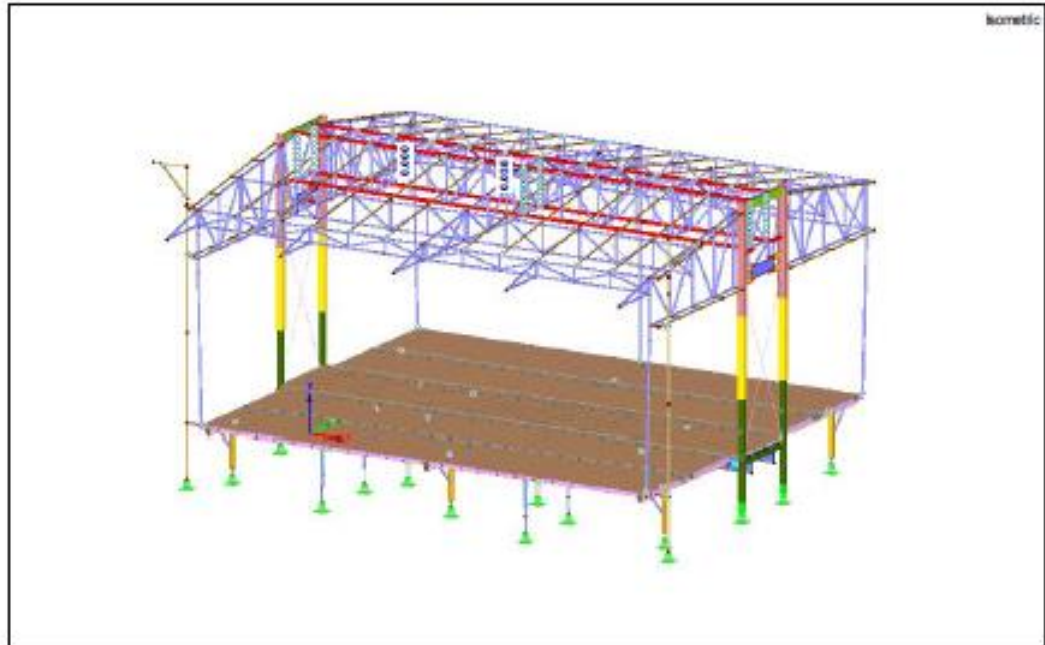
For the PA there is a special tower mounted on each side of the main stage  
Each tower can be used to rig a PA with maximum loading of 800 kg.

Project number : 2017002



## 2.2 Input for the main roof system model.

### 2.2.1 Construction model of the main roof system.



Project number : 2017002

