

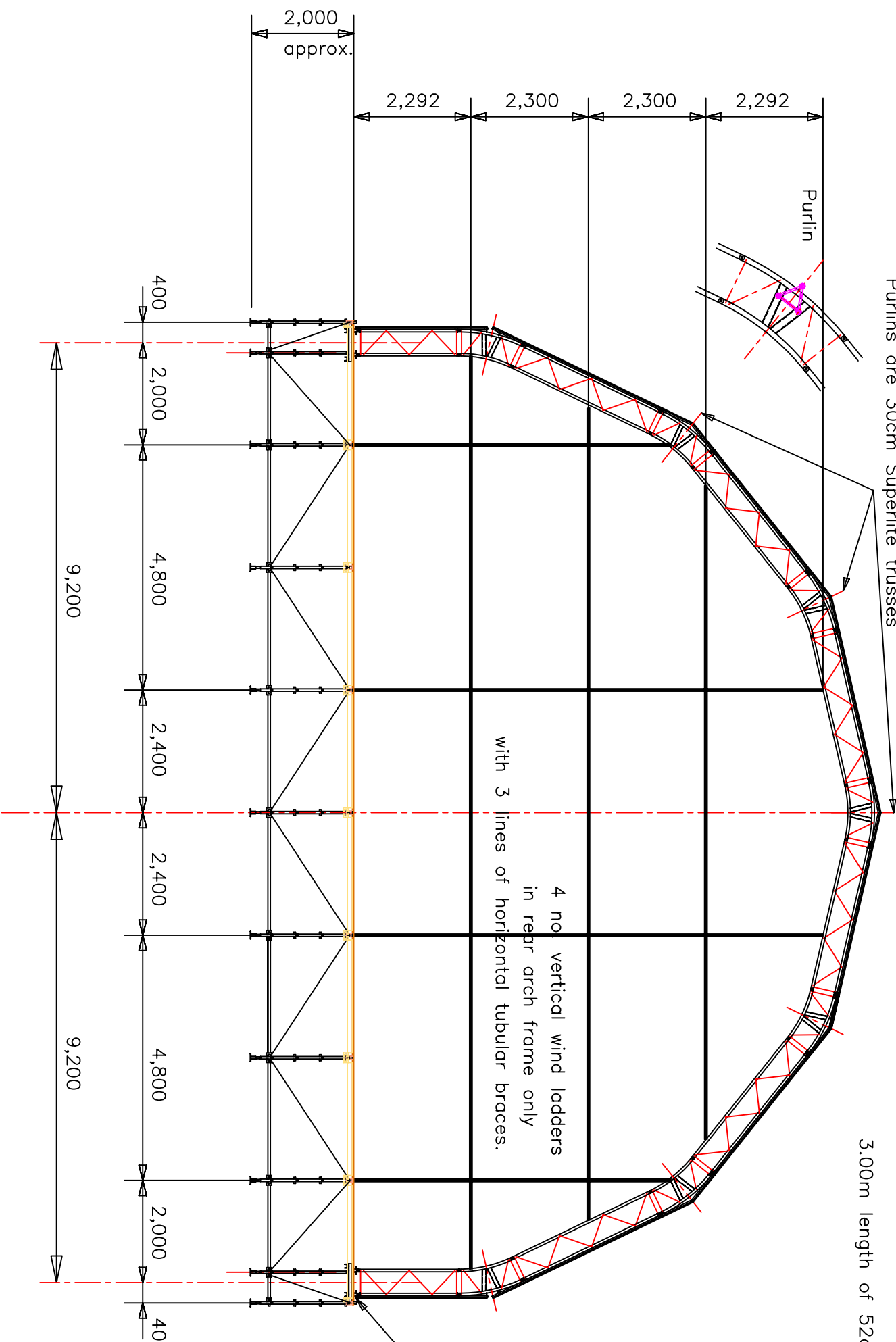
- 4 no. identical Arch Frameworks @ 4.80m centres
- Each arch framework comprises:
 - 2 lengths of 52cm Supertruss x 1.976m (legs)
 - 6 lengths of 52cm Supertruss x 3.000m
 - 7 knuckles of 52cm curved Supertruss

7 no. positions Purlin Superlite trusses
Purlins are 30cm Superlite trusses

3.00m length of 52cm Supertruss

52cm curved Supertruss (Knuckle)

grooved extrusion for the cover clipped onto the 52cm Supertruss



Purpose-made base piece, connecting the legs to the stage framework
For details see drawing no. 10
25mm plywood deck on modified RMD Kwikform framework.
For details see drawing no. 15

19m ARCH ROOF – STRUCTURAL ANALYSIS – 03
ARCH FRAMEWORK – CROSS-SECTION